

CPTC-EIF2A-1 (CAB080320)

Uniprot ID: [Q9BY44](#)

Protein name: EIF2A_HUMAN

Full name: Eukaryotic translation initiation factor 2A

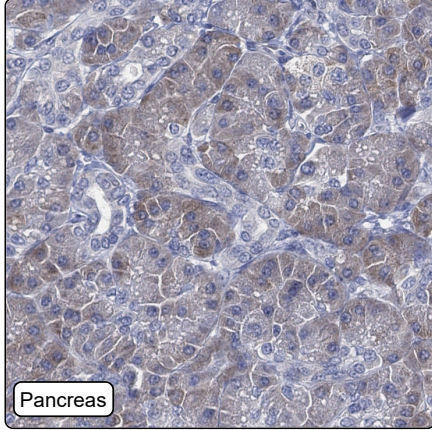
Tissue specificity: Widely expressed. Expressed at higher level in pancreas, heart, brain and placenta.

Function: Functions in the early steps of protein synthesis of a small number of specific mRNAs. Acts by directing the binding of methionyl-tRNAi to 40S ribosomal subunits. In contrast to the eIF-2 complex, it binds methionyl-tRNAi to 40S subunits in a codon-dependent manner, whereas the eIF-2 complex binds methionyl-tRNAi to 40S subunits in a GTP-dependent manner.

Protein existence: Experimental evidence at protein level

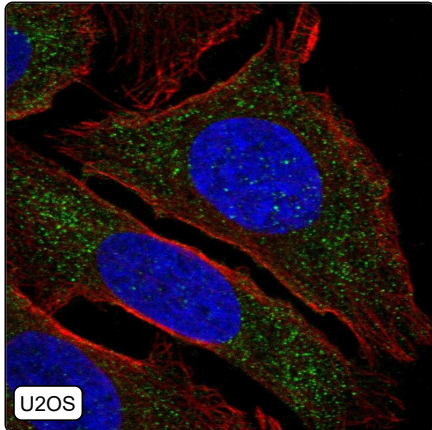
Comment:

Immunohistochemistry



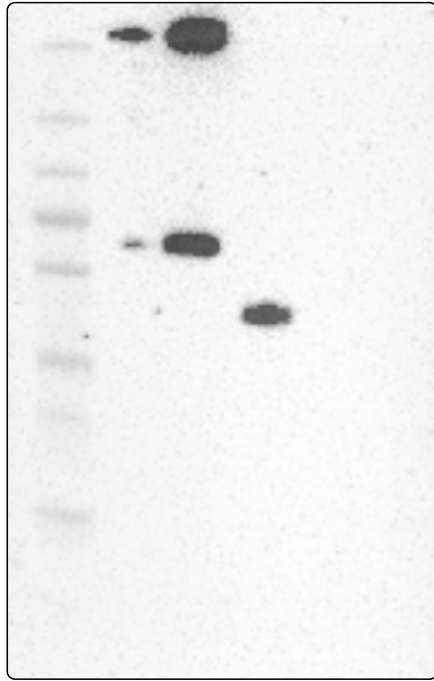
IHC protocol:	HIER pH6, Dilution 1:250
IHC test staining:	Cytoplasmic positivity in immune cells and intestines.
Literature conformance:	Not consistent with gene/protein characterization data
Literature significance:	
RNA similarity:	Very low consistency between antibody staining and RNA expression data
RNA tissue specificity:	Low tissue specificity
RNA tissue distribution:	Detected in all
IHC Sibling similarity:	Other antibody shows dissimilar IHC staining pattern

Immunofluorescence



IF Overlay:	antibody (green), anti-tubulin (red) and DAPI (blue)
IF main location:	Cytosol - 7: Approved (auto)
IF additional location:	
IF approved for publication on HPA:	Yes
IF in THP-1:	Cytosol
IF in U2OS:	Cytosol

Western blot



WB Size markers (kDa):	250, 130, 100, 70, 55, 35, 25, 15, 10
WB Lanes:	Marker (1), RT-4 (2), U-251MG (3), Plasma (4), Liver (5), Tonsil (6)
WB Target weight (kDa):	26, 35, 58, 62, 64, 65
WB Validation:	Supported (Band of predicted size in kDa (+/-20%) with additional bands present.)