

# CPTC-CGB-6 (CAB080143)

Uniprot ID: [P0DN86](#)

Protein name: CGB3\_HUMAN

Full name: Choriogonadotropin subunit beta 3

Tissue specificity: High expression in the placenta throughout pregnancy.

Function: Beta subunit of the human chorionic gonadotropin (hCG). hCG is a complex glycoprotein composed of two glycosylated subunits alpha and beta which are non-covalently associated. The alpha subunit is identical to those in the pituitary gonadotropin hormones (LH, FSH and TSH). The beta subunits are distinct in each of the hormones and confer receptor and biological specificity. Has an essential role in pregnancy and maternal adaptation. Stimulates the ovaries to synthesize the steroids that are essential for the maintenance of pregnancy.

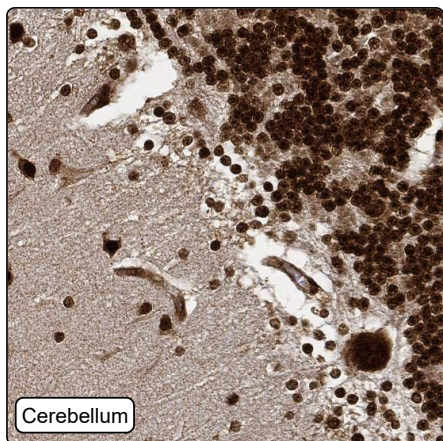
Subcellular location:

Secreted (*experimental evidence*)

Protein existence: Experimental evidence at protein level

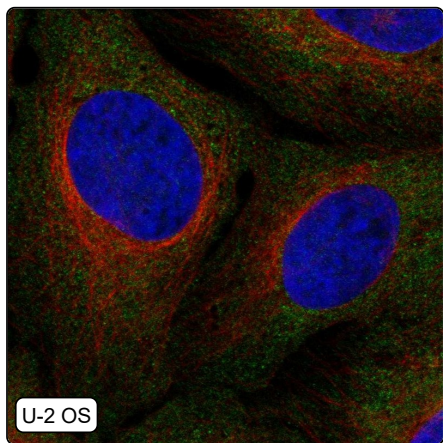
Comment:

## Immunohistochemistry



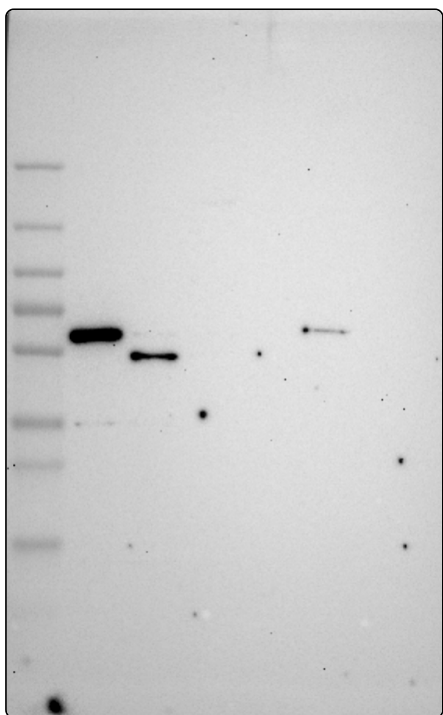
IHC protocol:	HIER pH6, Dilution 1:1400
IHC test staining:	Cytoplasmic and nuclear positivity in most tissues.
Literature conformance:	Not consistent with gene/protein characterization data
Literature significance:	
RNA similarity:	Very low consistency between antibody staining and RNA expression data
RNA tissue specificity:	Tissue enriched (placenta)
RNA tissue distribution:	Detected in some
IHC Sibling similarity:	Other antibody shows dissimilar IHC staining pattern

## Immunofluorescence



IF Overlay:	antibody (green), anti-tubulin (red) and DAPI (blue)
IF main location:	Cytosol - 8: <b>Approved</b> (auto)
IF additional location:	
IF approved for publication on HPA:	No
IF in SiHa:	Cytosol
IF in U-251 MG:	Cytosol
IF in U-2 OS:	Cytosol

# Western blot



<b>WB Size markers (kDa):</b>	250, 130, 100, 70, 55, 35, 25, 15, 10
<b>WB Lanes:</b>	Marker (1), RT4 (2), U-251 MG (3), Plasma (4), Liver (5), Tonsil (6)
<b>WB Target weight (kDa):</b>	18
<b>WB Validation:</b>	Uncertain (Only bands not corresponding to the predicted size.)