

CPTC-PMS1-1 (CAB080370)

Uniprot ID: [P54277](#)

Protein name: PMS1_HUMAN

Full name: PMS1 protein homolog 1

Function: Probably involved in the repair of mismatches in DNA.

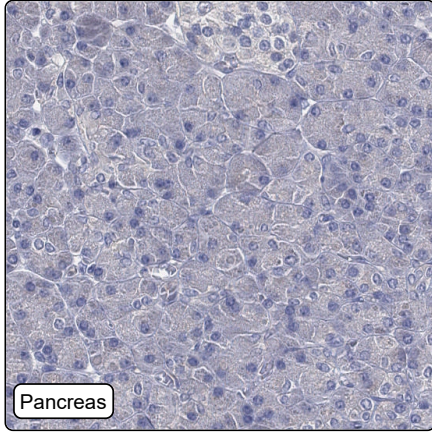
Subcellular location:

Nucleus (*match to sequence model*)

Protein existence: Experimental evidence at protein level

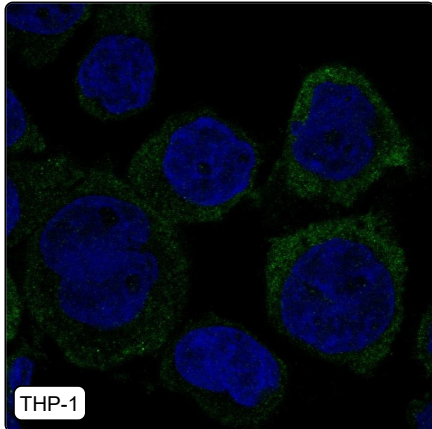
Comment:

Immunohistochemistry



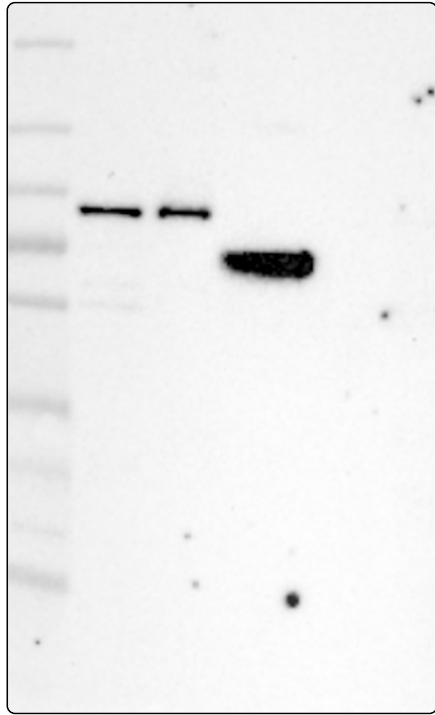
IHC protocol:	HIER pH6, Dilution 1:600
IHC test staining:	No positivity was observed.
Literature conformance:	Not consistent with gene/protein characterization data
Literature significance:	
RNA similarity:	Very low consistency between antibody staining and RNA expression data
RNA tissue specificity:	Tissue enhanced (testis)
RNA tissue distribution:	Detected in all
IHC Sibling similarity:	Other antibody shows dissimilar IHC staining pattern

Immunofluorescence



IF Overlay:	antibody (green), anti-tubulin (red) and DAPI (blue)
IF main location:	Cytosol - 7: Approved (auto)
IF additional location:	
IF approved for publication on HPA:	No
IF in THP-1:	Cytosol
IF in U2OS:	Negative

Western blot



WB Size markers (kDa):	250, 130, 100, 70, 55, 35, 25, 15, 10
WB Lanes:	Marker (1), RT-4 (2), U-251MG (3), Plasma (4), Liver (5), Tonsil (6)
WB Target weight (kDa):	5, 8, 18, 20, 21, 28, 31, 63, 74, 75, 81, 87, 87, 87, 101, 106
WB Validation:	Supported (Single band corresponding to the predicted size in kDa (+/-20%.))