

CPTC-KRT5-2 (CAB080101)

Uniprot ID: [P13647](#)

Protein name: K2C5_HUMAN

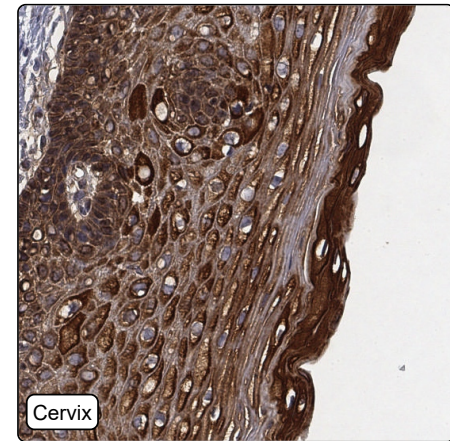
Full name: Keratin, type II cytoskeletal 5

Tissue specificity: Expressed in corneal epithelium (at protein level).

Protein existence: Experimental evidence at protein level

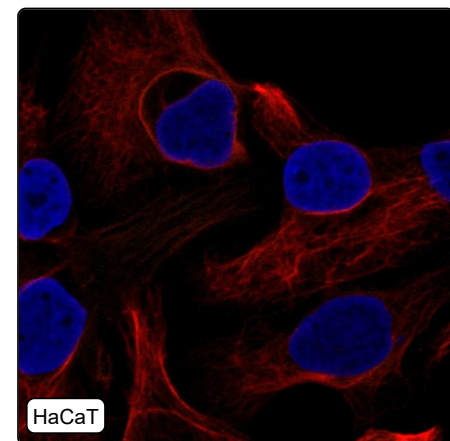
Comment:

Immunohistochemistry



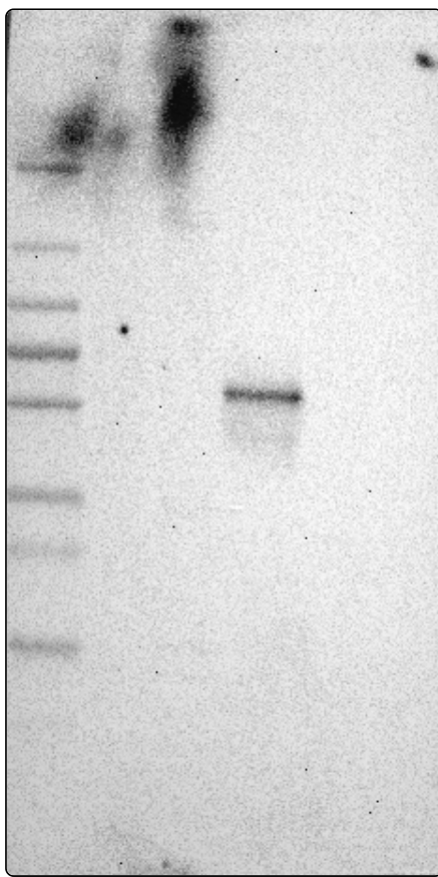
IHC protocol:	HIER pH6, Dilution 1:5000
IHC test staining:	Strong cytoplasmic positivity in several tissues.
Literature conformance:	Consistent with extensive gene/protein characterization data
Literature significance:	
RNA similarity:	High consistency between antibody staining and RNA expression data
RNA tissue specificity:	Group enriched (esophagus,skin 1,vagina)
RNA tissue distribution:	Detected in many
IHC Sibling similarity:	Other antibody shows similar IHC staining pattern

Immunofluorescence



IF Overlay:	antibody (green), anti-tubulin (red) and DAPI (blue)
IF main location:	
IF additional location:	
IF approved for publication on HPA:	No
IF in HaCaT:	Negative
IF in SiHa:	Negative
IF in U-2 OS:	Negative

Western blot



WB Size markers (kDa):	250, 130, 100, 70, 55, 35, 25, 15, 10
WB Lanes:	Marker (1), RT4 (2), U-251 MG (3), Plasma (4), Liver (5), Tonsil (6)
WB Target weight (kDa):	12, 14, 21, 22, 23, 62
WB Validation:	Supported (Single band corresponding to the predicted size in kDa (+/-20%.))