

# SULT1E1-3

Uniprot ID: [P49888](#)

**Protein name:** ST1E1\_HUMAN

**Full name:** Estrogen sulfotransferase

**Protein existence:** evidence at protein level

**Function:** May control the level of the estrogen receptor by sulfurylating free estradiol. Maximally sulfates beta-estradiol and estrone at concentrations of 20 nM. Also sulfates dehydroepiandrosterone, pregnenolone, ethinylestradiol, equalenin, diethylstilbesterol and 1-naphthol, at significantly higher concentrations; however, cortisol, testosterone and dopamine are not sulfated.

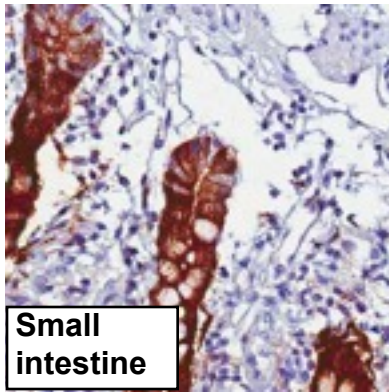
**Subcellular location:** Cytoplasm.

**Tissue specificity:** Liver, intestine and at lower level in the kidney.

**Three antibodies: SULT1E1-1, SULT1E1-2, and SULT1E1-3 were tested. All three antibodies were approved for IHC. SULT1E1-1 was selected for full protein profiling.**

## SULT1E1-3 (CAB047346)

OK



### Immunohistochemistry

**IHC protocol:** HIER pH 6, Dilution 1:500

**IHC test staining:** Cytoplasmic staining of intestine and liver.

### Western blot

**WB Size markers (kDa):** 250, 130, 95, 72, 55, 36, 28, 17, 11

**WB Lanes:** Marker(1), RT-4(2), U251 MG(3), Plasma(4), Liver(5), Tonsil(6)

**WB Target weight (kDa):** 35, 15

**WB Validation:** Supportive (Single band corresponding to the predicted size in kDa (+/-20%))

