

Serine/threonine-protein phosphatase 2A regulatory subunit B'

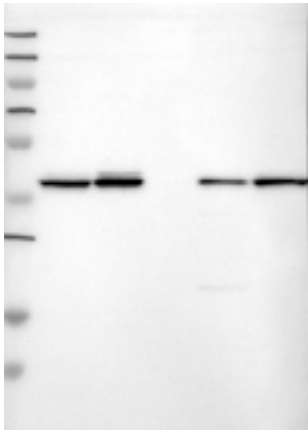
PP2A-4 (CAB036002)



Immunohistochemistry

IHC protocol: HIER pH 6, Dilution 1:1600

IHC test staining: Widely expressed cytoplasmic staining. Strong staining was seen in e.g. testis, kidney, pancreas and fallopian tube. Some nuclear staining can also be seen.



Western blot

WB Size markers (kDa): 230, 130, 95, 72, 56, 36, 28, 17, 11

WB Lanes: Marker(1), RT-4(2), U251 MG(3), Plasma(4), Liver(5), Tonsil(6)

WB Target weight (kDa): 37, 32, 30, 29, 28, 24, 19, 15, 14, 12, 7

WB Validation: Supportive (Single band corresponding to the predicted size in kDa (+/-20%))