

# CPTC-UBE2E1 -3 (CAB080074)

**Uniprot ID:** [P51965](#)

**Protein name:** UB2E1\_HUMAN

**Full name:** Ubiquitin-conjugating enzyme E2 E1

**Function:** Accepts ubiquitin from the E1 complex and catalyzes its covalent attachment to other proteins. Catalyzes the covalent attachment of ISG15 to other proteins. Mediates the selective degradation of short-lived and abnormal proteins. In vitro also catalyzes 'Lys-48'-linked polyubiquitination.

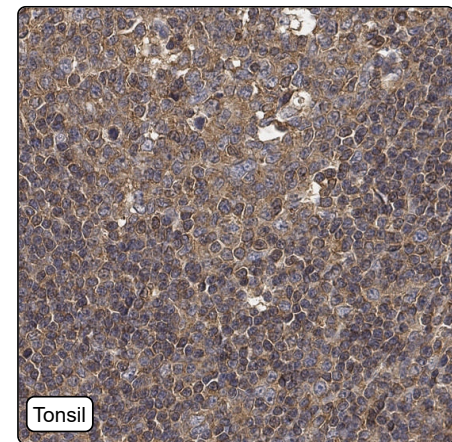
**Subcellular location:**

Nucleus (*experimental evidence*)

**Protein existence:** Experimental evidence at protein level

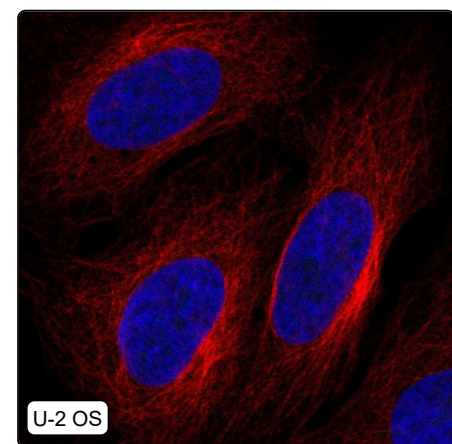
**Comment:**

## Immunohistochemistry



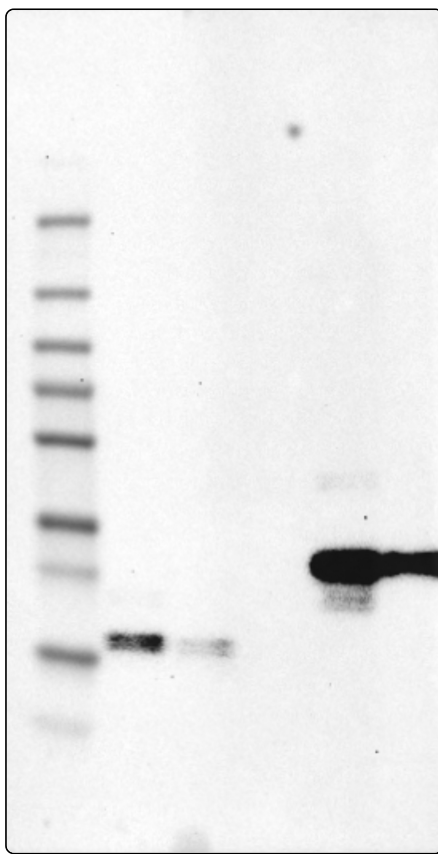
<b>IHC protocol:</b>	HIER pH6, Dilution 1:300
<b>IHC test staining:</b>	Cytoplasmic positivity in few tissues.
<b>Literature conformance:</b>	Not consistent with gene/protein characterization data
<b>Literature significance:</b>	
<b>RNA similarity:</b>	Low consistency between antibody staining and RNA expression data
<b>RNA tissue specificity:</b>	Low tissue specificity
<b>RNA tissue distribution:</b>	Detected in all
<b>IHC Sibling similarity:</b>	Other antibody shows dissimilar IHC staining pattern

## Immunofluorescence



<b>IF Overlay:</b>	antibody (green), anti-tubulin (red) and DAPI (blue)
<b>IF main location:</b>	
<b>IF additional location:</b>	
<b>IF approved for publication on HPA:</b>	No
<b>IF in SiHa:</b>	Negative
<b>IF in SK-MEL-30:</b>	Negative
<b>IF in U-2 OS:</b>	Negative

# Western blot



<b>WB Size markers (kDa):</b>	250, 130, 100, 70, 55, 35, 25, 15, 10
<b>WB Lanes:</b>	Marker (1), RT4 (2), U-251 MG (3), Plasma (4), Liver (5), Tonsil (6)
<b>WB Target weight (kDa):</b>	16, 17, 18, 19, 19, 21
<b>WB Validation:</b>	Supported (Band of predicted size in kDa (+/-20%) with additional bands present.)