

MAGE4

UniProt

Function: Not known, though may play a role in embryonal development and tumor transformation or aspects of tumor progression.

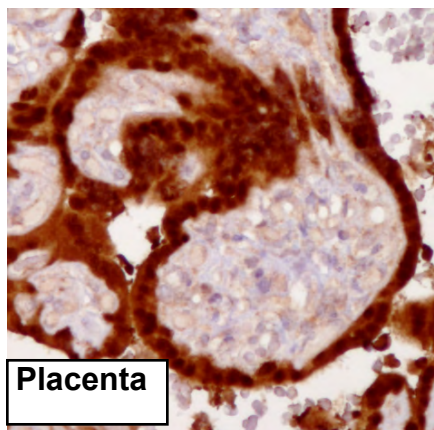
Subcellular location: Not determined

Tissue specificity: Expressed in many tumors of several types, such as melanoma, head and neck squamous cell carcinoma, lung carcinoma and breast carcinoma, but not in normal tissues except for testes and placenta.

Three antibodies: MAGE4-1, MAGE4-2 and MAGE4-3 were tested. MAGE4-1 and MAGE4-2 were approved for IHC. MAGE4-1 was selected for full protein profiling.

MAGE4-3 (CAB040537)

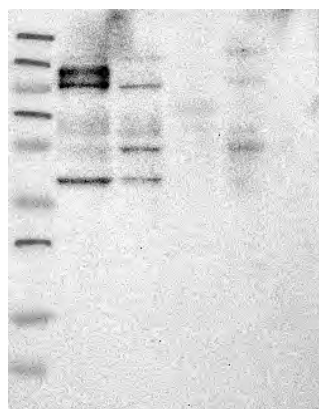
Failed for IHC



Immunohistochemistry

IHC protocol: HIER pH 6, Dilution 1:1000

IHC test staining: Mainly cytoplasmic staining, which is pronounced in testis and squamous cell carcinomas (SCC) but also intestine, kidney and pancreas. Additional nuclear staining in some SCC.



Western blot

WB Size markers (kDa): 250, 130, 95, 72, 55, 36, 28, 17, 11

WB Lanes: Marker(1), RT-4(2), U251 MG(3), Plasma(4), Liver(5), Tonsil(6)

WB Target weight (kDa): 38, 35, 26, 25, 23, 19

WB Validation: Non-Supportive (Only bands not corresponding to the predicted size)