

CPTC-LBX1-3 (CAB079928)

Uniprot ID: [P52954](#)

Protein name: LBX1_HUMAN

Full name: Transcription factor LBX1

Function: Transcription factor required for the development of GABAergic interneurons in the dorsal horn of the spinal cord and migration and further development of hypaxial muscle precursor cells for limb muscles, diaphragm and hypoglossal cord.

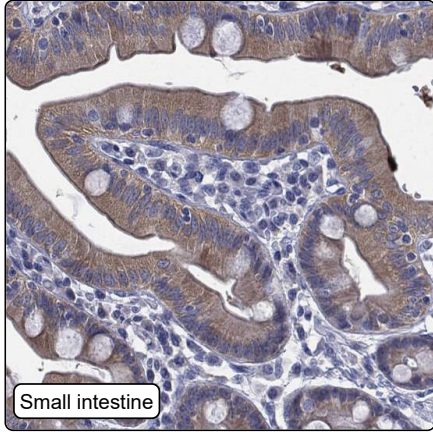
Subcellular location:

Nucleus (*curator inference*)

Protein existence: Experimental evidence at protein level

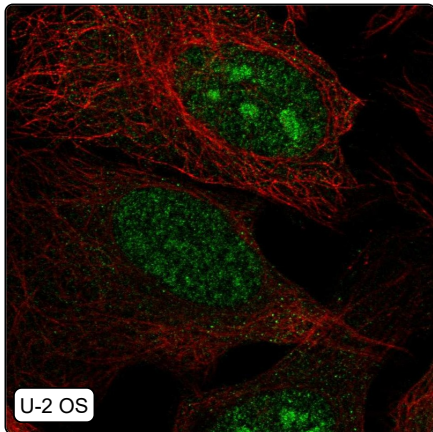
Comment: ICC-IF: We will try to get a good staining of this antibody in two more cell lines, before publication on the HPA. /Ulrika Axelsson

Immunohistochemistry



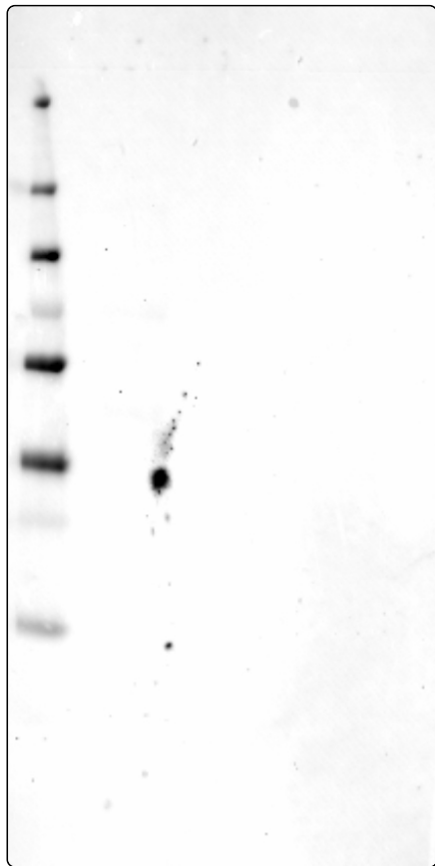
| | |
|--------------------------|---|
| IHC protocol: | HIER pH6, Dilution 1:250 |
| IHC test staining: | Weak cytoplasmic positivity in gastrointestinal tract. Remaining tissues were negative. |
| Literature conformance: | Not consistent with gene/protein characterization data |
| Literature significance: | Limited |
| RNA consistency: | Not consistent with RNA expression data |
| IHC Sibling similarity: | Other antibody shows dissimilar IHC staining pattern |
| IHC fail comment: | ANTIBODY FAILED: Improbable histological location, Not consistent with RNA |

Immunofluorescence



| | |
|-------------------------|---|
| IF Overlay: | antibody (green), anti-tubuline (red) and DAPI (blue) |
| IF main location: | Nucleoplasm - 7: Approved (auto) |
| IF additional location: | Nucleoli - 7: Approved (auto) |
| IF Antibody score: | Approved |
| IF in HEK 293: | Negative |
| IF in RH-30: | Negative |
| IF in U-2 OS: | Nucleoplasm Nucleoli |

Western blot



| | |
|--------------------------------|--|
| WB Size markers (kDa): | 250, 130, 100, 70, 55, 35, 25, 15, 10 |
| WB Lanes: | Marker (1), RT4 (2), U-251 MG (3), Plasma (4), Liver (5), Tonsil (6) |
| WB Target weight (kDa): | 30 |
| WB Validation: | Uncertain (No bands detected.) |