

CPTC-ITGAE-1 (CAB079987)

Uniprot ID: [P38570](#)

Protein name: ITAE_HUMAN

Full name: Integrin alpha-E

Tissue specificity: Expressed on a subclass of T-lymphocytes known as intra-epithelial lymphocytes which are located between mucosal epithelial cells.
Function: Integrin alpha-E/beta-7 is a receptor for E-cadherin. It mediates adhesion of intra-epithelial T-lymphocytes to epithelial cell monolayers.

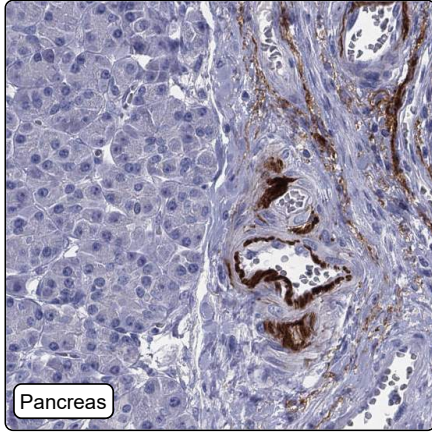
Subcellular location:

Membrane (Topo: Single-pass type I membrane protein)

Protein existence: Experimental evidence at protein level

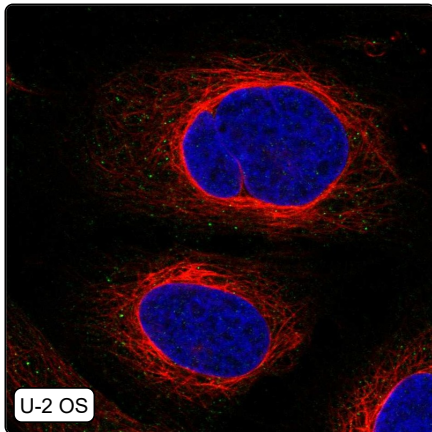
Comment: ICC-IF: Not expressed at RNA level in our cell line panel. /Ulrika Axelsson

Immunohistochemistry



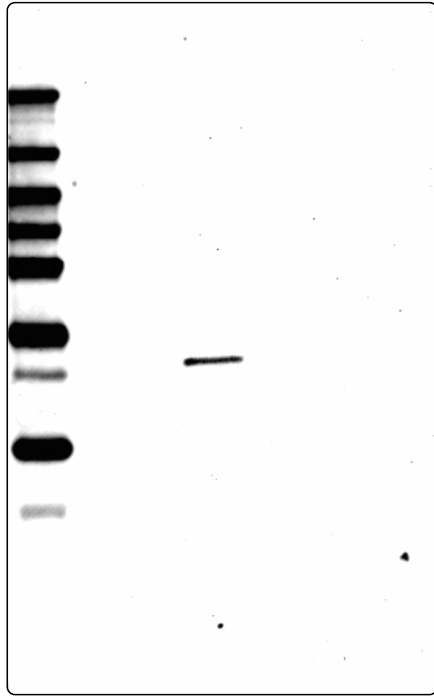
IHC protocol:	HIER pH6, Dilution 1:250
IHC test staining:	Strong positivity in endothelium. Additional weak to moderate positivity in a subset of immunecells.
Literature conformance:	Not consistent with gene/protein characterization data
Literature significance:	Limited
RNA consistency:	Not consistent with RNA expression data
IHC Sibling similarity:	Other antibody shows partly similar IHC staining pattern
IHC fail comment:	ANTIBODY FAILED: Improbable histological location,Not consistent with RNA

Immunofluorescence



IF Overlay:	antibody (green), anti-tubuline (red) and DAPI (blue)
IF main location:	
IF additional location:	
IF Antibody score:	Approved
IF in U-2 OS:	Negative

Western blot



WB Size markers (kDa):	250, 130, 100, 70, 55, 35, 25, 15, 10
WB Lanes:	Marker (1), RT4 (2), U-251 MG (3), Plasma (4), Liver (5), Tonsil (6)
WB Target weight (kDa):	16, 130
WB Validation:	Uncertain (Single band differing more than +/-20% from predicted size in kDa and not supported by experimental and/or bioinformatic data.)