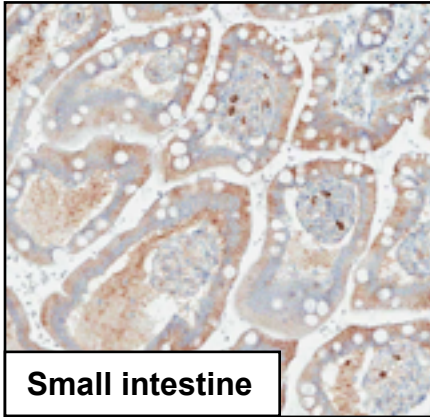


Ras-related C3 botulinum toxin substrate 1

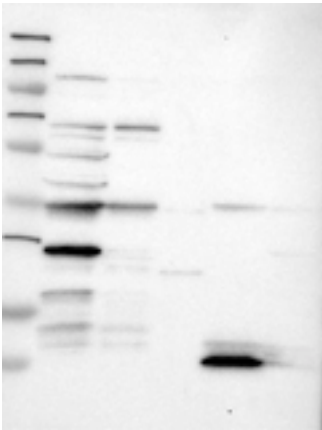
RAC1-2 (CAB035995)



Immunohistochemistry

IHC protocol: HIER pH 6, Dilution 1:35

IHC test staining: Slightly granular cytoplasmic staining mainly in intestine and colorectal cancer.



Western blot

WB Size markers (kDa): 230, 130, 95, 72, 56, 36, 28, 17, 11

WB Lanes: Marker(1), RT-4(2), U251 MG(3), Plasma(4), Liver (5), Tonsil(6)

WB Target weight (kDa): 23, 21, 17, 16

WB Validation: Supportive (Band of predicted size in kDa (+/-20%) with additional bands present)