

# CPTC-TSHB-2 (CAB080112)

Uniprot ID: [P01222](#)

Protein name: TSHB\_HUMAN

Full name: Thyrotropin subunit beta

Function: Indispensable for the control of thyroid structure and metabolism.

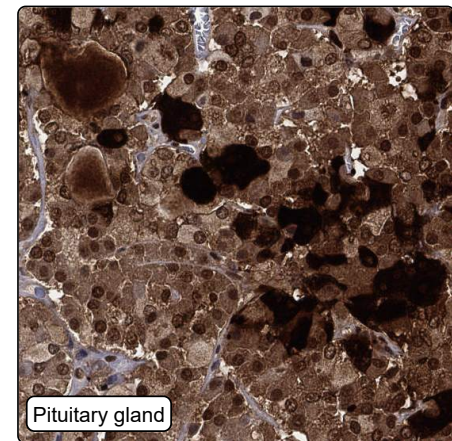
Subcellular location:

Secreted

Protein existence: Experimental evidence at protein level

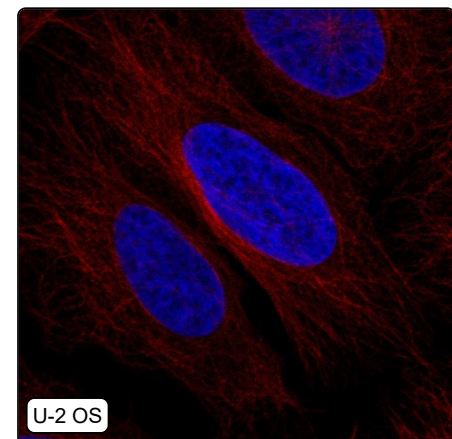
Comment:

## Immunohistochemistry



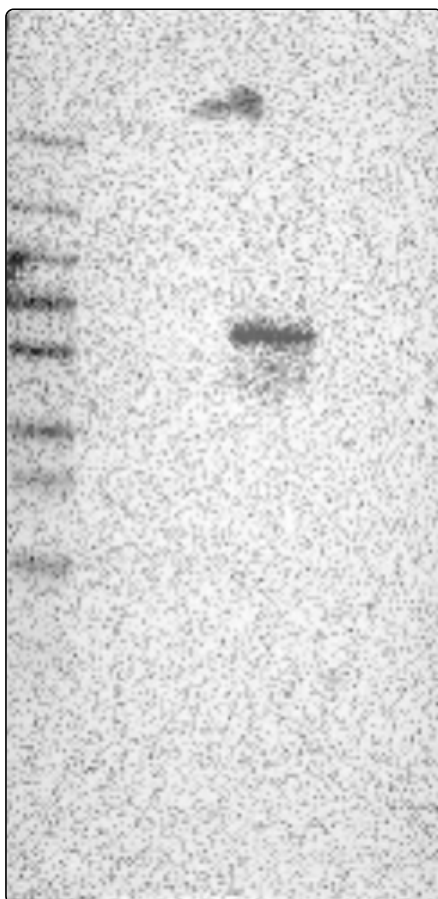
IHC protocol:	HIER pH6, Dilution 1:500
IHC test staining:	Cytoplasmic expression in pituitary gland.
Literature conformance:	Consistent with extensive gene/protein characterization data
Literature significance:	
RNA similarity:	High consistency between antibody staining and RNA expression data
RNA tissue specificity:	Tissue enriched (pituitary gland)
RNA tissue distribution:	Detected in single
IHC Sibling similarity:	Other antibody shows partly similar IHC staining pattern

## Immunofluorescence



IF Overlay:	antibody (green), anti-tubulin (red) and DAPI (blue)
IF main location:	
IF additional location:	
IF approved for publication on HPA:	No
IF in SiHa:	Negative
IF in SK-MEL-30:	Negative
IF in U-2 OS:	Negative

# Western blot



<b>WB Size markers (kDa):</b>	250, 130, 100, 70, 55, 35, 25, 15, 10
<b>WB Lanes:</b>	Marker (1), RT4 (2), U-251 MG (3), Plasma (4), Liver (5), Tonsil (6)
<b>WB Target weight (kDa):</b>	16
<b>WB Validation:</b>	Uncertain (Only bands not corresponding to the predicted size.)