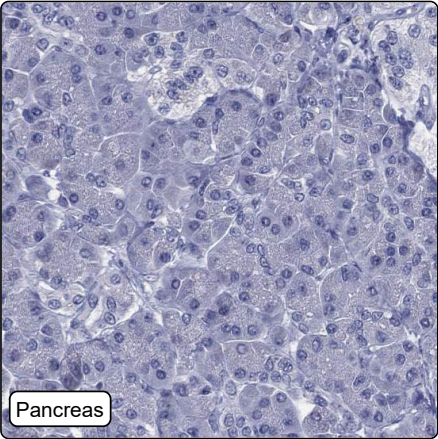


CPTC-TIPRL-1 (CAB080274)

Uniprot ID: [O75663](#)
Protein name: TIPRL_HUMAN
Full name: TIP41-like protein
Function: May be a allosteric regulator of serine/threonine-protein phosphatase 2A (PP2A). Isoform 1 inhibits catalytic activity of the PP2A(D) core complex in vitro. The PP2A(C):TIPRL complex does not show phosphatase activity. Acts as negative regulator of serine/threonine-protein phosphatase 4 probably by inhibiting the formation of the active PPP4C:PPP4R2 complex; the function is proposed to implicate it in DNA damage response by promoting H2AX phosphorylated on Ser-140 (gamma-H2AX). May play a role in the regulation of ATM/ATR signaling pathway controlling DNA replication and repair.
Subcellular location:
Cytoplasm (*experimental evidence*)
Protein existence: Experimental evidence at protein level

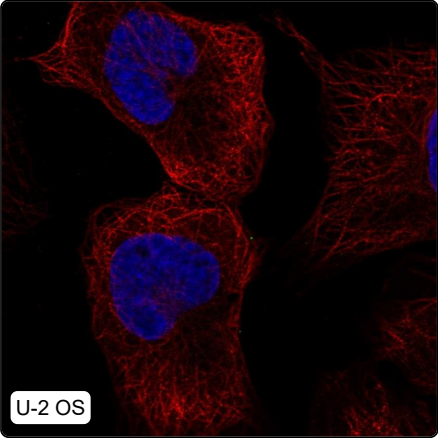
Comment:

Immunohistochemistry



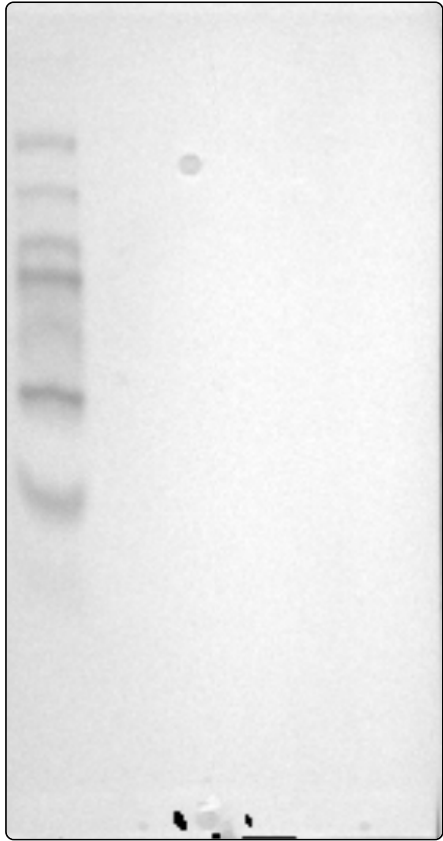
IHC protocol:	HIER pH6, Dilution 1:125
IHC test staining:	Negative in all tissues.
Literature conformance:	Not consistent with gene/protein characterization data
Literature significance:	
RNA similarity:	Very low consistency between antibody staining and RNA expression data
RNA tissue specificity:	Low tissue specificity
RNA tissue distribution:	Detected in all
IHC Sibling similarity:	Other antibody shows dissimilar IHC staining pattern
IHC fail comment:	ANTIBODY FAILED: Not consistent with RNA

Immunofluorescence



IF Overlay:	antibody (green), anti-tubulin (red) and DAPI (blue)
IF main location:	
IF additional location:	
IF approved for publication on HPA:	No
IF in THP-1:	Negative
IF in U-2 OS:	Negative

Western blot



WB Size markers (kDa):	250, 130, 100, 70, 55, 35, 25, 15, 10
WB Lanes:	Marker (1), RT4 (2), U-251 MG (3), Plasma (4), Liver (5), Tonsil (6)
WB Target weight (kDa):	20, 31
WB Validation:	Uncertain (No bands detected.)