

# CPTC-Ly6K-3 (CAB079929)

Uniprot ID: [Q17RY6](#)

Protein name: LY6K\_HUMAN

Full name: Lymphocyte antigen 6K

Tissue specificity: Specifically expressed in testis (at protein level).

Function: Required for sperm migration into the oviduct and male fertility by controlling binding of sperm to zona pellucida (By similarity). May play a role in cell growth (PubMed:18089789).

Subcellular location:

Secreted (*experimental evidence*)

Cytoplasm (*experimental evidence*)

Cell membrane (*by similarity*) (Topo: Lipid-anchor,GPI-anchor (*by similarity*))

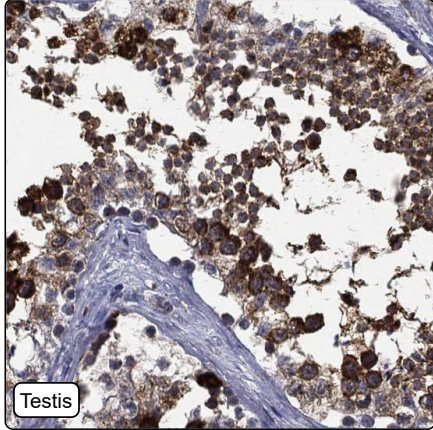
Cytoplasmic vesicle > Secretory vesicle > Acrosome (*by similarity*)

Membrane raft (*by similarity*)

Protein existence: Experimental evidence at protein level

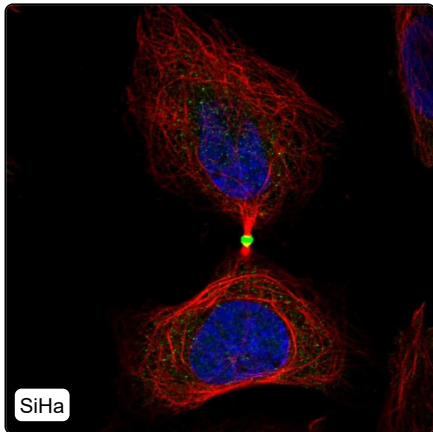
Comment:

## Immunohistochemistry



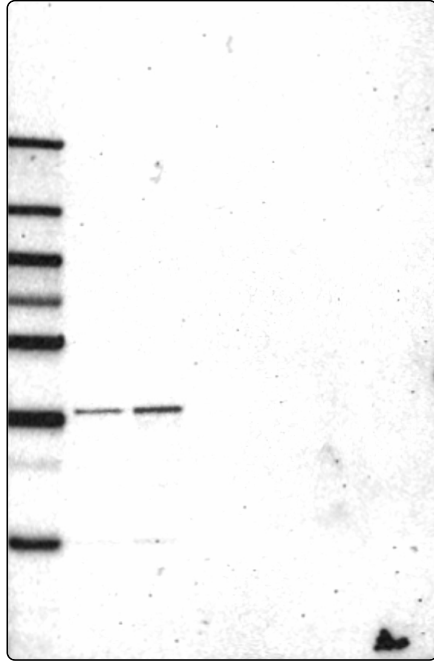
IHC protocol:	HIER pH6, Dilution 1:650
IHC test staining:	Cytoplasmic positivity in testis.
Literature conformance:	Consistent with gene/protein characterization data
Literature significance:	Limited
RNA consistency:	Consistent with RNA expression data
IHC Sibling similarity:	Other antibody shows similar IHC staining pattern

## Immunofluorescence



IF Overlay:	antibody (green), anti-tubulin (red) and DAPI (blue)
IF main location:	Midbody ring - 12: <b>Uncertain</b> (auto)
IF additional location:	Cytosol - 3: <b>Supportive</b> (auto)
IF Antibody score:	Failed IF
IF in HeLa:	Midbody ring Cytosol
IF in SiHa:	Midbody ring
IF in U-2 OS:	Negative

# Western blot



<b>WB Size markers (kDa):</b>	250, 130, 100, 70, 55, 35, 25, 15, 10
<b>WB Lanes:</b>	Marker (1), RT4 (2), U-251 MG (3), Plasma (4), Liver (5), Tonsil (6)
<b>WB Target weight (kDa):</b>	10, 11, 12, 19
<b>WB Validation:</b>	Uncertain (Weak band of predicted size but with additional bands of higher intensity also present.)