

CPTC-ITGAX-1 (CAB080214)

Uniprot ID: [P20702](#)

Protein name: ITAX_HUMAN

Full name: Integrin alpha-X

Tissue specificity: Predominantly expressed in monocytes and granulocytes.

Function: Integrin alpha-X/beta-2 is a receptor for fibrinogen. It recognizes the sequence G-P-R in fibrinogen. It mediates cell-cell interaction during inflammatory responses. It is especially important in monocyte adhesion and chemotaxis.

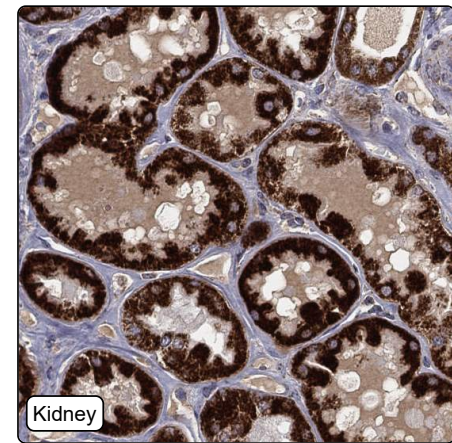
Subcellular location:

Membrane (Topo: Single-pass type I membrane protein)

Protein existence: Experimental evidence at protein level

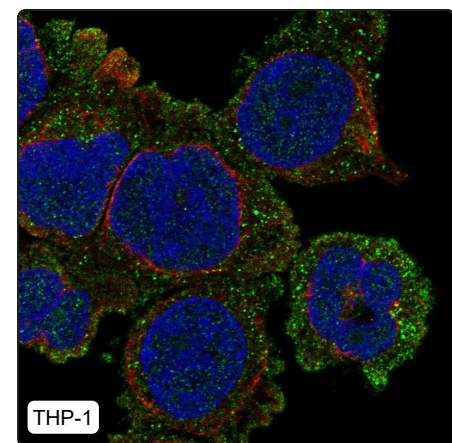
Comment:

Immunohistochemistry



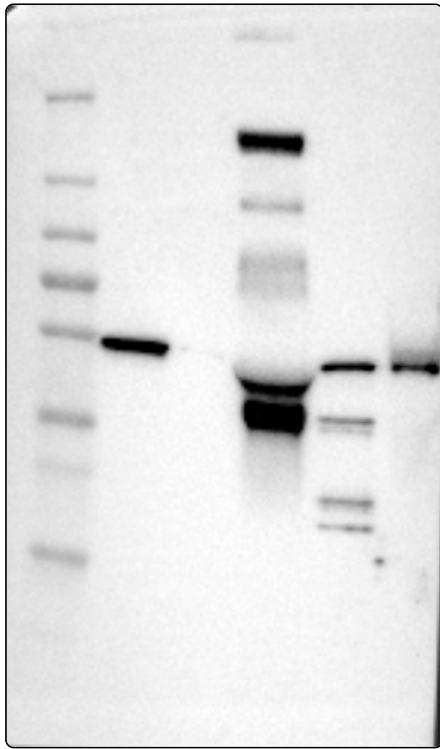
IHC protocol:	HIER pH6, Dilution 1:900
IHC test staining:	Cytoplasmic positivity in kidney, stomach and liver.
Literature conformance:	Not consistent with gene/protein characterization data
Literature significance:	
RNA similarity:	Very low consistency between antibody staining and RNA expression data
RNA tissue specificity:	Group enriched (bone marrow,brain,lung,lymphoid tissue)
RNA tissue distribution:	Detected in many
IHC Sibling similarity:	Other antibody shows dissimilar IHC staining pattern
IHC fail comment:	ANTIBODY FAILED: Not consistent with RNA

Immunofluorescence



IF Overlay:	antibody (green), anti-tubulin (red) and DAPI (blue)
IF main location:	Plasma membrane - 3: Supportive (manual) Vesicles - 8: Approved (auto)
IF additional location:	
IF approved for publication on HPA:	Yes
IF in THP-1:	Vesicles Plasma membrane
IF in U-2 OS:	Vesicles

Western blot



WB Size markers (kDa):	250, 130, 100, 70, 55, 35, 25, 15, 10
WB Lanes:	Marker (1), RT4 (2), U-251 MG (3), Plasma (4), Liver (5), Tonsil (6)
WB Target weight (kDa):	20, 128, 129
WB Validation:	Uncertain (Weak band of predicted size but with additional bands of higher intensity also present.)