

# CPTC-MUC16-2 (CAB080360)

Uniprot ID: [Q8WXI7](#)

Protein name: MUC16\_HUMAN

Full name: Mucin-16

**Tissue specificity:** Expressed in corneal and conjunctival epithelia (at protein level). Overexpressed in ovarian carcinomas and ovarian low malignant potential (LMP) tumors as compared to the expression in normal ovarian tissue and ovarian adenomas.

**Function:** Thought to provide a protective, lubricating barrier against particles and infectious agents at mucosal surfaces.

**Subcellular location:**

Cell membrane (Topo: Single-pass type I membrane protein)

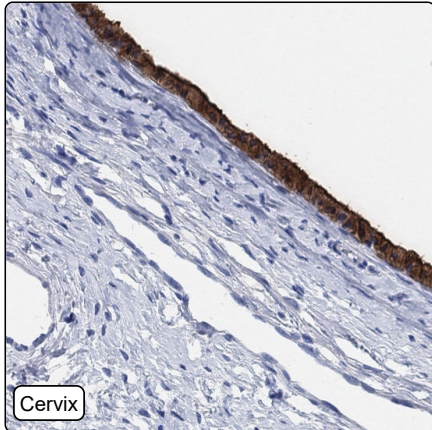
Secreted > Extracellular space

**NOTE:** May be liberated into the extracellular space following the phosphorylation of the intracellular C-terminus which induces the proteolytic cleavage and liberation of the extracellular domain.

**Protein existence:** Experimental evidence at protein level

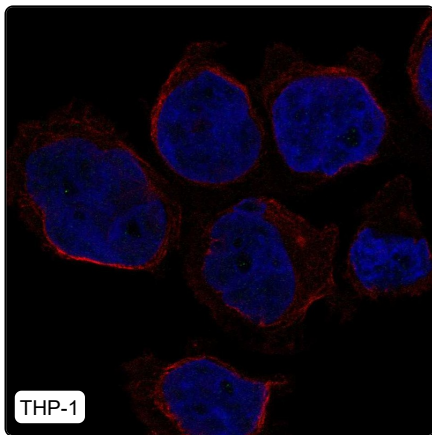
Comment:

## Immunohistochemistry



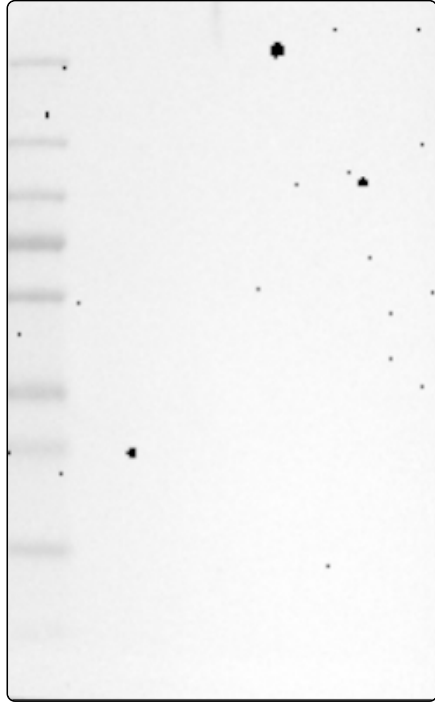
<b>IHC protocol:</b>	HIER pH6, Dilution 1:250
<b>IHC test staining:</b>	Cytoplasmic positivity in glandular cells in cervix, salivary gland, endometrium and fallopian tube. Additional nuclear staining in CNS.
<b>Literature conformance:</b>	Consistent with extensive gene/protein characterization data
<b>Literature significance:</b>	
<b>RNA similarity:</b>	Medium consistency between antibody staining and RNA expression data
<b>RNA tissue specificity:</b>	Group enriched (adipose tissue,cervix,fallopian tube,salivary gland)
<b>RNA tissue distribution:</b>	Detected in some
<b>IHC Sibling similarity:</b>	Other antibody shows partly similar IHC staining pattern

## Immunofluorescence



<b>IF Overlay:</b>	antibody (green), anti-tubulin (red) and DAPI (blue)
<b>IF main location:</b>	
<b>IF additional location:</b>	
<b>IF approved for publication on HPA:</b>	No
<b>IF in THP-1:</b>	Negative

# Western blot



<b>WB Size markers (kDa):</b>	250, 130, 100, 70, 55, 35, 25, 15, 10
<b>WB Lanes:</b>	Marker (1), RT-4 (2), U-251MG (3), Plasma (4), Liver (5), Tonsil (6)
<b>WB Target weight (kDa):</b>	148, 1519
<b>WB Validation:</b>	Uncertain (No bands detected.)