

CPTC-SAAL1-1 (CAB079948)

Uniprot ID: Q96ER3

Protein name: SAAL1_HUMAN

Full name: Protein SAAL1

Tissue specificity: Highly expressed in testis and ovary, and to a lesser extent in the lung, spleen and the heart (at protein level).

Function: Plays a role in promoting the proliferation of synovial fibroblasts in response to proinflammatory stimuli.

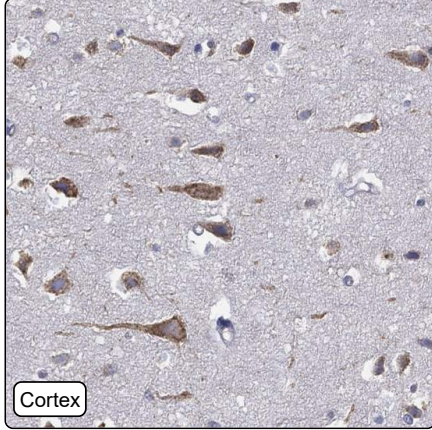
Subcellular location:

Nucleus (*experimental evidence*)

Protein existence: Experimental evidence at protein level

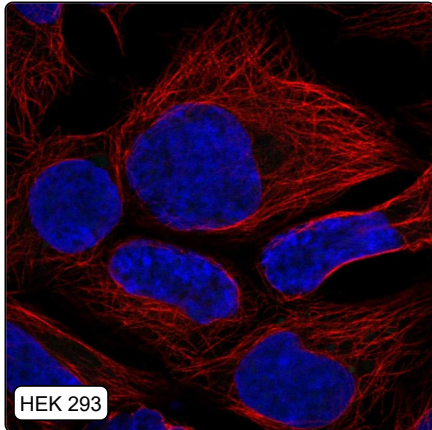
Comment:

Immunohistochemistry



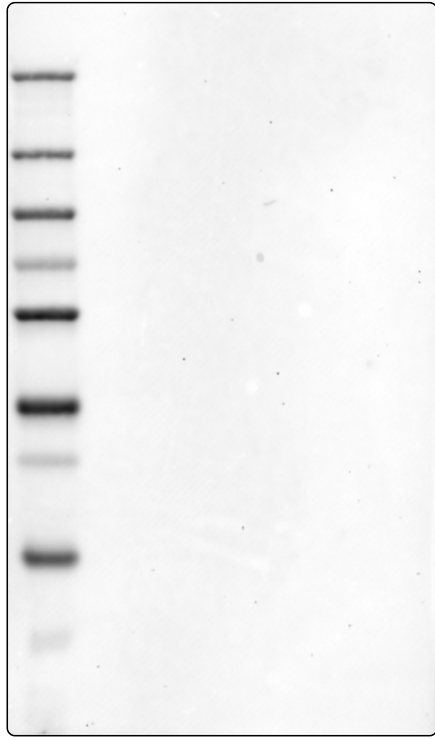
IHC protocol:	HIER pH6, Dilution 1:250
IHC test staining:	Weak to moderate cytoplasmic positivity in neuronal processes, testis and lipofuscin.
Literature conformance:	Not consistent with gene/protein characterization data
Literature significance:	Limited
RNA consistency:	Not consistent with RNA expression data
IHC Sibling similarity:	Other antibody shows dissimilar IHC staining pattern
IHC fail comment:	ANTIBODY FAILED: Improbable histological location,Not consistent with RNA

Immunofluorescence



IF Overlay:	antibody (green), anti-tubuline (red) and DAPI (blue)
IF main location:	
IF additional location:	
IF Antibody score:	Failed IF
IF in A549:	Negative
IF in HEK 293:	Negative
IF in U-2 OS:	Negative

Western blot



WB Size markers (kDa):	250, 130, 100, 70, 55, 35, 25, 15, 10
WB Lanes:	Marker (1), RT4 (2), U-251 MG (3), Plasma (4), Liver (5), Tonsil (6)
WB Target weight (kDa):	15, 17, 23, 29, 53, 54, 54
WB Validation:	Uncertain (No bands detected.)