

CPTC-LIME1-1 (CAB079959)

Uniprot ID: Q9H400

Protein name: LIME1_HUMAN

Full name: Lck-interacting transmembrane adapter 1

Tissue specificity: Expressed in peripheral blood lymphocytes, lymphoid tissues, and liver. Present in T-cells and plasma cells, and in various hematopoietic cell lines (at protein level).

Function: Involved in BCR (B-cell antigen receptor)-mediated signaling in B-cells and TCR (T-cell antigen receptor)-mediated T-cell signaling in T-cells. In absence of TCR signaling, may be involved in CD4-mediated inhibition of T-cell activation. Couples activation of these receptors and their associated kinases with distal intracellular events such as calcium mobilization or MAPK activation through the recruitment of PLCG2, GRB2, GRAP2, and other signaling molecules.

Subcellular location:

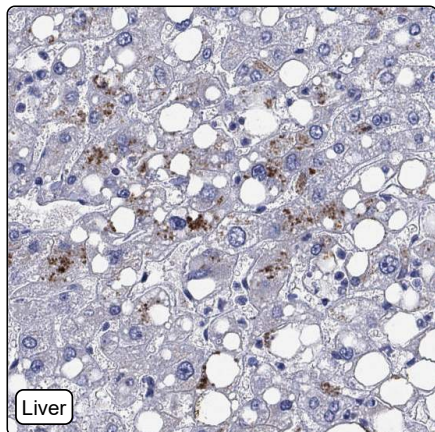
Cell membrane (*experimental evidence*) (Topo: Single-pass type III membrane protein (*experimental evidence*))

NOTE: Present in lipid rafts. Recruited to the immunological synapse upon conjugation of T-cell with antigen-presenting cell.

Protein existence: Experimental evidence at protein level

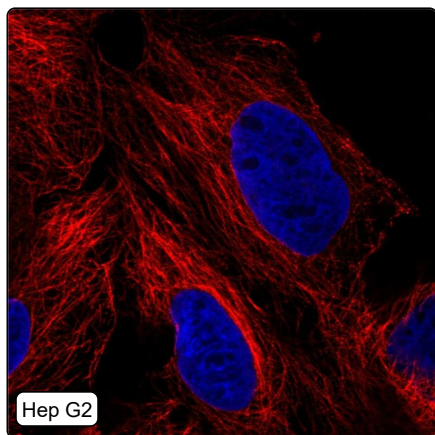
Comment:

Immunohistochemistry



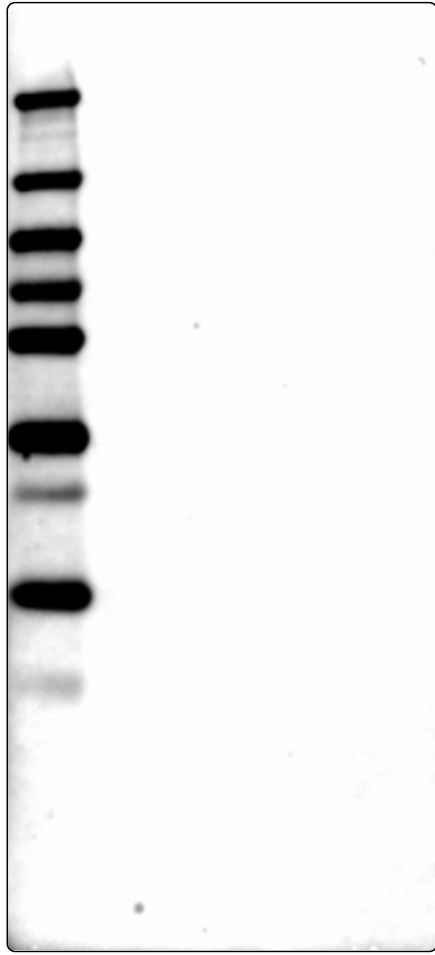
IHC protocol:	HIER pH6, Dilution 1:250
IHC test staining:	Lipofuscin positivity observed in liver. Remaining tissues were negative.
Literature conformance:	Not consistent with gene/protein characterization data
Literature significance:	Limited
RNA consistency:	Not consistent with RNA expression data
IHC Sibling similarity:	Other antibody shows dissimilar IHC staining pattern
IHC fail comment:	ANTIBODY FAILED: Negative

Immunofluorescence



IF Overlay:	antibody (green), anti-tubuline (red) and DAPI (blue)
IF main location:	
IF additional location:	
IF Antibody score:	Failed IF
IF in Hep G2:	Negative
IF in REH:	Negative
IF in U-2 OS:	Negative

Western blot



WB Size markers (kDa):	250, 130, 100, 70, 55, 35, 25, 15, 10
WB Lanes:	Marker (1), RT4 (2), U-251 MG (3), Plasma (4), Liver (5), Tonsil (6)
WB Target weight (kDa):	12, 13, 18, 22, 27, 31
WB Validation:	Uncertain (No bands detected.)