

CPTC-TAGLN-1(CAB080268)

Uniprot ID: [Q01995](#)

Protein name: TAGL_HUMAN

Full name: Transgelin

Function: Actin cross-linking/gelling protein (By similarity). Involved in calcium interactions and contractile properties of the cell that may contribute to replicative senescence.

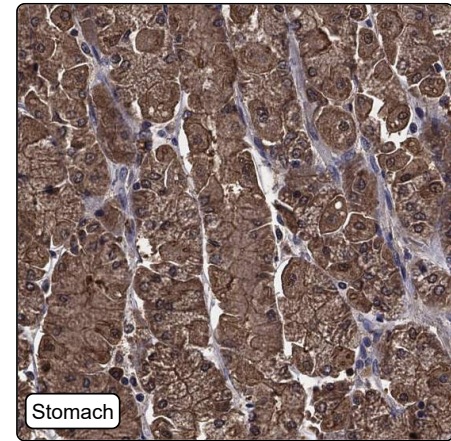
Subcellular location:

Cytoplasm (*curator inference*)

Protein existence: Experimental evidence at protein level

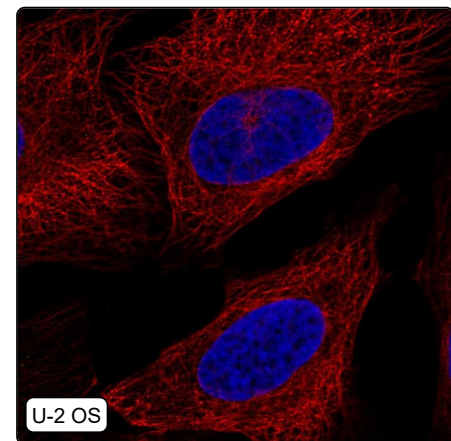
Comment:

Immunohistochemistry



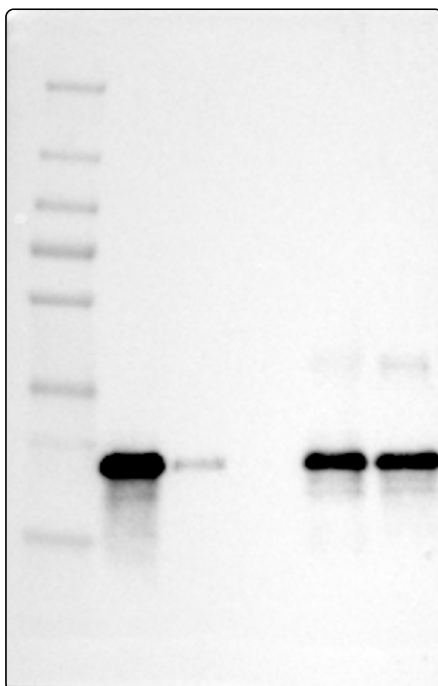
IHC protocol:	HIER pH6, Dilution 1:25000
IHC test staining:	Cytoplasmic positivity in most tissues.
Literature conformance:	Not consistent with gene/protein characterization data
Literature significance:	
RNA similarity:	Low consistency between antibody staining and RNA expression data
RNA tissue specificity:	Tissue enhanced (endometrium 1,intestine)
RNA tissue distribution:	Detected in all
IHC Sibling similarity:	Other antibody shows dissimilar IHC staining pattern
IHC fail comment:	ANTIBODY FAILED: Unspecific staining,Not consistent with RNA

Immunofluorescence



IF Overlay:	antibody (green), anti-tubulin (red) and DAPI (blue)
IF main location:	
IF additional location:	
IF approved for publication on HPA:	No
IF in THP-1:	Negative
IF in U-2 OS:	Negative

Western blot



WB Size markers (kDa):	250, 130, 100, 70, 55, 35, 25, 15, 10
WB Lanes:	Marker (1), RT4 (2), U-251 MG (3), Plasma (4), Liver (5), Tonsil (6)
WB Target weight (kDa):	10, 17, 23, 23, 23, 23, 23
WB Validation:	Supported (Band of predicted size in kDa (+/-20%) with additional bands present.)