

# CPTC-PLIN2-1 (CAB080243)

Uniprot ID: [Q99541](#)

Protein name: PLIN2\_HUMAN

Full name: Perilipin-2

Tissue specificity: Milk lipid globules.

Function: Structural component of lipid droplets, which is required for the formation and maintenance of lipid storage droplets.

Subcellular location:

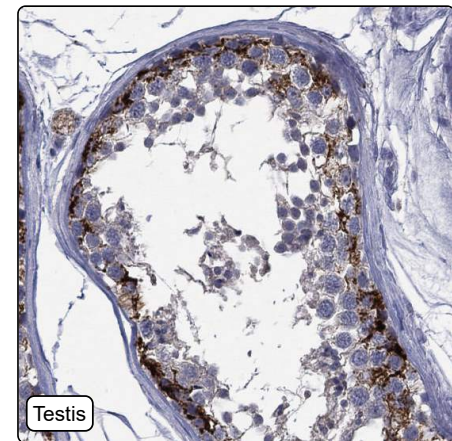
Membrane (*by similarity*) (Topo: Peripheral membrane protein (*by similarity*))

Lipid droplet (*experimental evidence, curator inference*)

Protein existence: Experimental evidence at protein level

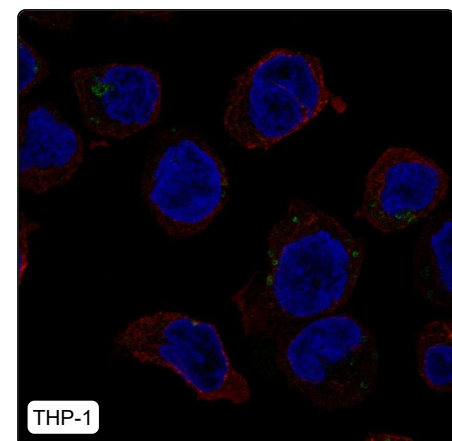
Comment:

## Immunohistochemistry



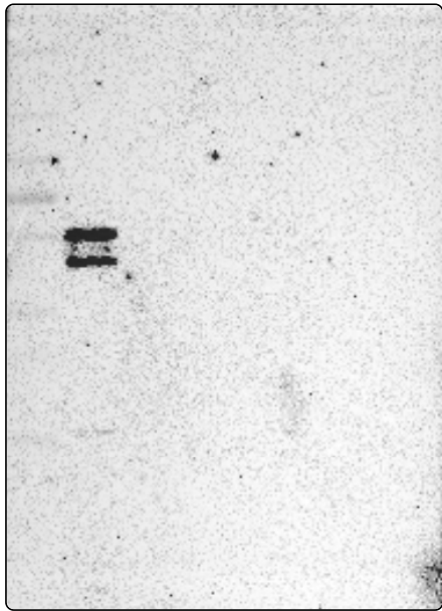
IHC protocol:	HIER pH6, Dilution 1:415
IHC test staining:	Positivity in testis and gastrointestinal tract.
Literature conformance:	Not consistent with gene/protein characterization data
Literature significance:	
RNA similarity:	Very low consistency between antibody staining and RNA expression data
RNA tissue specificity:	Tissue enhanced (adipose tissue,liver)
RNA tissue distribution:	Detected in all
IHC Sibling similarity:	Other antibody shows dissimilar IHC staining pattern
IHC fail comment:	ANTIBODY FAILED: Not consistent with RNA

## Immunofluorescence



IF Overlay:	antibody (green), anti-tubulin (red) and DAPI (blue)
IF main location:	Lipid droplets - 1 [3]: <b>Supportive</b> (auto)
IF additional location:	
IF approved for publication on HPA:	Yes
IF in THP-1:	Lipid droplets
IF in U-2 OS:	Negative

# Western blot



<b>WB Size markers (kDa):</b>	250, 130, 100, 70, 55, 35, 25, 15, 10
<b>WB Lanes:</b>	Marker (1), RT4 (2), U-251 MG (3), Plasma (4), Liver (5), Tonsil (6)
<b>WB Target weight (kDa):</b>	12, 13, 14, 48
<b>WB Validation:</b>	Supported (Band of predicted size in kDa (+/-20%) with additional bands present.)