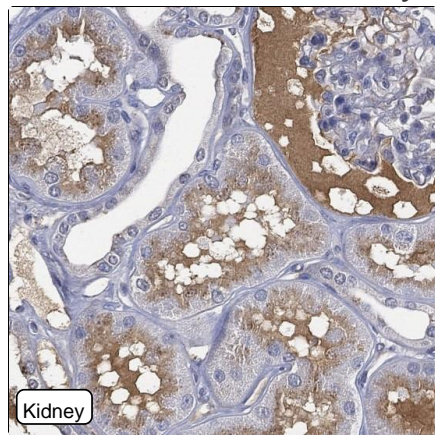


# CPTC-MST1-1 (CAB080358)

**NCBI DATA:**  
**MST1** - provided by HGNC  
**Official Full Name** - macrophage stimulating 1 provided by HGNC  
**Primary source** - HGNC:HGNC:7380  
**See related** - Ensembl:ENSG00000173531 MIM:142408; AllianceGenome:HGNC:7380  
**Gene type** - protein coding  
**RefSeq status** - REVIEWED  
**Organism** - Homo sapiens  
**Lineage** - Eukaryota; Metazoa; Chordata; Craniata; Vertebrata; Euteleostomi; Mammalia; Eutheria; Euarchontoglires; Primates; Haplorrhini; Catarrhini; Hominidae; Homo  
**Also known as** - MSP; HGFL; NF15S2; D3F15S2; DNF15S2  
**Summary** - The protein encoded by this gene contains four kringle domains and a serine protease domain, similar to that found in hepatic growth factor. Despite the presence of the serine protease domain, the encoded protein may not have any proteolytic activity. The receptor for this protein is RON tyrosine kinase, which upon activation stimulates ciliary motility of ciliated epithelial lung cells. This protein is secreted and cleaved to form an alpha chain and a beta chain bridged by disulfide bonds. [provided by RefSeq, Jan 2010]  
**Annotation information** - Note: MST1 (Gene ID: 4485) and STK4 (Gene ID: 6789) share the MST1 symbol/alias in common. MST1 is a widely used alternative name for serine/threonine kinase 4 (STK4), which can be confused with the official symbol for macrophage stimulating 1 (MST1). [01 Jun 2018]  
**Expression** - Biased expression in liver (RPKM 45.2), duodenum (RPKM 24.6) and 13 other tissues

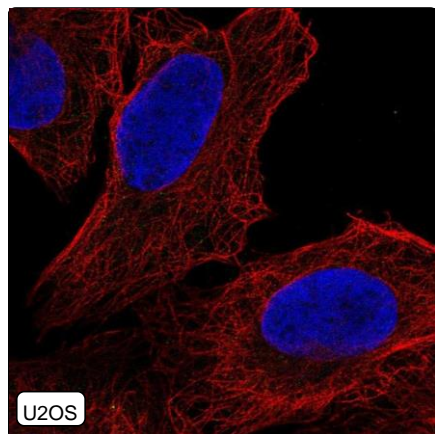
**Comment:**

## Immunohistochemistry



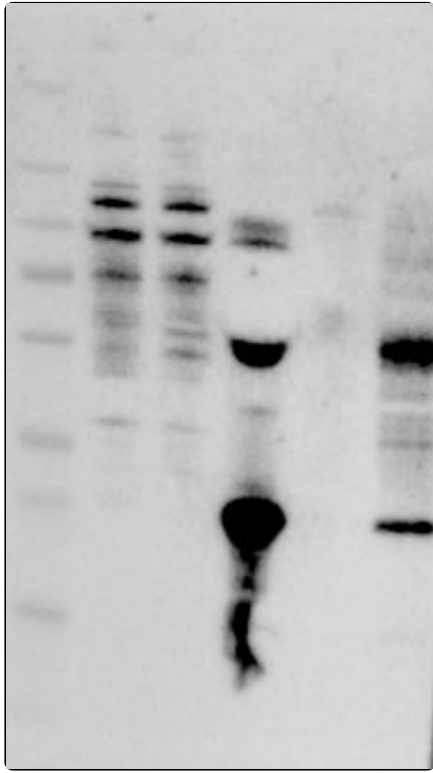
<b>IHC protocol:</b>	HIER pH6, Dilution 1:600
<b>IHC test staining:</b>	Plasma positivity in several tissues including cytoplasmic positivity in a subset of immune cells.
<b>Literature conformance:</b>	Consistent with extensive gene/protein characterization data
<b>Literature significance:</b>	
<b>RNA similarity:</b>	No tissue staining or RNA expression data available for comparison
<b>RNA tissue specificity:</b>	Tissue enriched (liver)
<b>RNA tissue distribution:</b>	Detected in all
<b>IHC Sibling similarity:</b>	Other antibody shows partly similar IHC staining pattern

## Immunofluorescence



<b>IF Overlay:</b>	antibody (green), anti-tubulin (red) and DAPI (blue)
<b>IF main location:</b>	
<b>IF additional location:</b>	
<b>IF approved for publication on HPA:</b>	No
<b>IF in THP-1:</b>	Negative
<b>IF in U2OS:</b>	Negative

# Western blot



<b>WB Size markers (kDa):</b>	250, 130, 100, 70, 55, 35, 25, 15, 10
<b>WB Lanes:</b>	Marker (1), RT-4 (2), U-251MG (3), Plasma (4), Liver (5), Tonsil (6)
<b>WB Target weight (kDa):</b>	21, 82
<b>WB Validation:</b>	Supported (Band of predicted size in kDa (+/-20%) with additional bands present.)