

CPTC-SLC31A2-2 (CAB080266)

Uniprot ID: [O15432](#)

Protein name: COPT2_HUMAN

Full name: Probable low affinity copper uptake protein 2

Tissue specificity: Ubiquitous.

Function: Involved in low-affinity copper uptake.

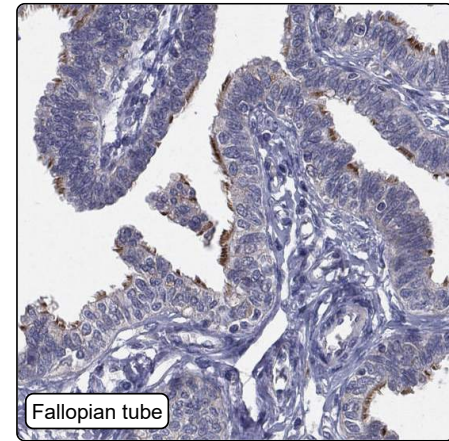
Subcellular location:

Membrane (*curator inference*) (Topo: Multi-pass membrane protein (*curator inference*))

Protein existence: Experimental evidence at protein level

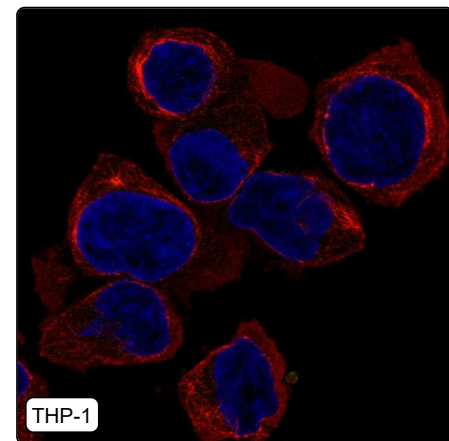
Comment:

Immunohistochemistry



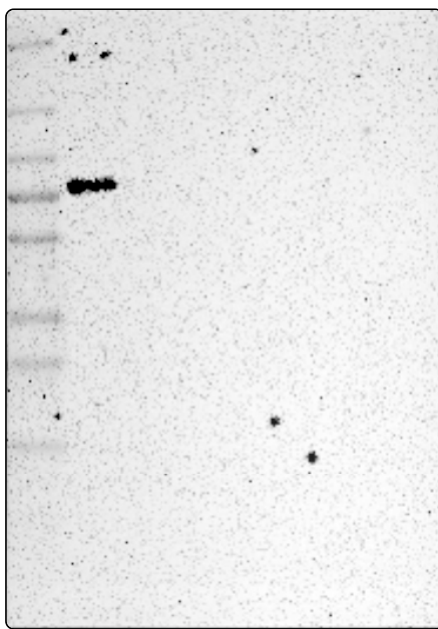
IHC protocol:	HIER pH6, Dilution 1:190
IHC test staining:	Cytoplasmic positivity in few tissues. Additional positivity in cilia.
Literature conformance:	Not consistent with gene/protein characterization data
Literature significance:	Limited
RNA similarity:	Very low consistency between antibody staining and RNA expression data
RNA tissue specificity:	Group enriched (parathyroid gland, salivary gland)
RNA tissue distribution:	Detected in many
IHC Sibling similarity:	Other antibody shows partly similar IHC staining pattern
IHC fail comment:	ANTIBODY FAILED: Improbable histological location, Not consistent with RNA

Immunofluorescence



IF Overlay:	antibody (green), anti-tubulin (red) and DAPI (blue)
IF main location:	
IF additional location:	
IF approved for publication on HPA:	No
IF in THP-1:	Negative
IF in U-2 OS:	Negative

Western blot



WB Size markers (kDa):	250, 130, 100, 70, 55, 35, 25, 15, 10
WB Lanes:	Marker (1), RT4 (2), U-251 MG (3), Plasma (4), Liver (5), Tonsil (6)
WB Target weight (kDa):	16
WB Validation:	Uncertain (Single band larger than predicted size in kDa (+20%) but partly supported by experimental and/or bioinformatic data.)