

# CPTC-CSF1-1(CAB080016)

Uniprot ID: [P09603](#)

Protein name: CSF1\_HUMAN

Full name: Macrophage colony-stimulating factor 1

**Function:** Cytokine that plays an essential role in the regulation of survival, proliferation and differentiation of hematopoietic precursor cells, especially mononuclear phagocytes, such as macrophages and monocytes. Promotes the release of proinflammatory chemokines, and thereby plays an important role in innate immunity and in inflammatory processes. Plays an important role in the regulation of osteoclast proliferation and differentiation, the regulation of bone resorption, and is required for normal bone development. Required for normal male and female fertility. Promotes reorganization of the actin cytoskeleton, regulates formation of membrane ruffles, cell adhesion and cell migration. Plays a role in lipoprotein clearance.

**Subcellular location:**

**Unnamed:**

Cell membrane (*experimental evidence*) (Topo: Single-pass type I membrane protein (*experimental evidence*))

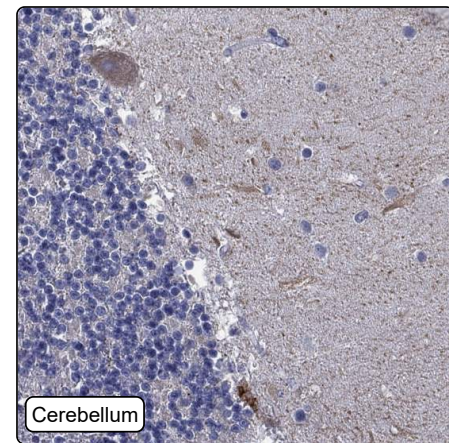
**Processed macrophage colony-stimulating factor 1:**

Secreted > Extracellular space

**Protein existence:** Experimental evidence at protein level

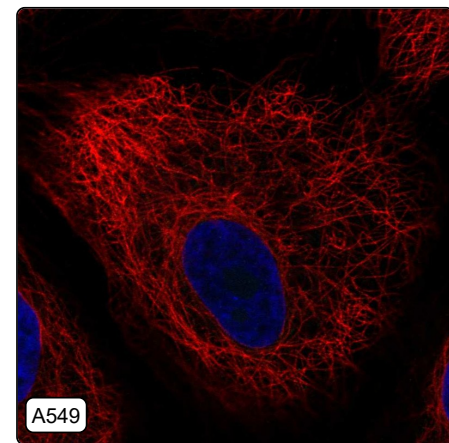
**Comment:**

## Immunohistochemistry



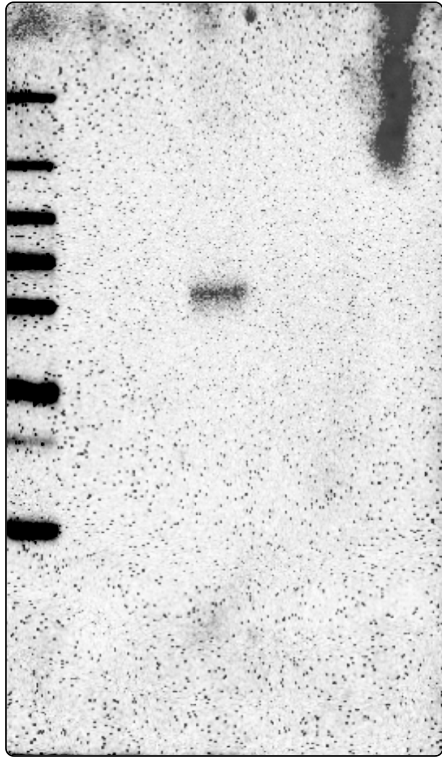
IHC protocol:	HIER pH6, Dilution 1:250
IHC test staining:	Rare positivity in neuronal processes. Remaining tissues were negative.
Literature conformance:	Not consistent with gene/protein characterization data
Literature significance:	
RNA similarity:	Very low consistency between antibody staining and RNA expression data
RNA tissue specificity:	Low tissue specificity
RNA tissue distribution:	Detected in all
IHC Sibling similarity:	

## Immunofluorescence



IF Overlay:	antibody (green), anti-tubuline (red) and DAPI (blue)
IF main location:	
IF additional location:	
IF Antibody score:	Failed IF
IF in A549:	Negative
IF in GAMG:	Negative
IF in U-2 OS:	Negative

# Western blot



<b>WB Size markers (kDa):</b>	250, 130, 100, 70, 55, 35, 25, 15, 10
<b>WB Lanes:</b>	Marker (1), RT4 (2), U-251 MG (3), Plasma (4), Liver (5), Tonsil (6)
<b>WB Target weight (kDa):</b>	13, 13, 17, 29, 31, 48, 60, 60
<b>WB Validation:</b>	Supported (Single band corresponding to the predicted size in kDa (+/-20%.))