

MDH1-2

Uniprot ID: [P40925](#)

Protein name: MDHC_HUMAN

Full name: Malate dehydrogenase, cytoplasmic

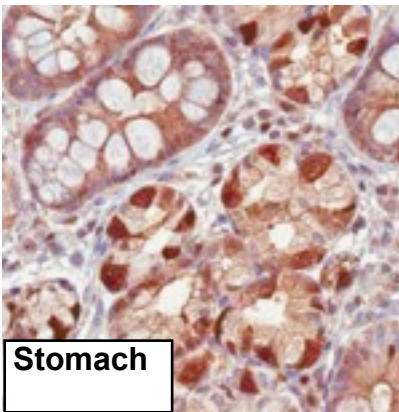
Protein existence: evidence at protein level

Subcellular location: Cytoplasm.

Three antibodies: MDH1-1, MDH1-2 and MDH1-3 were tested. All three were approved for IHC. MDH1-1 was selected for full protein profiling.

MDH1-2 (CAB047334)

OK



Immunohistochemistry

IHC protocol: HIER pH 6, Dilution 1:60000

IHC test staining: Predominantly cytoplasmic staining with additional sporadic nuclear staining.

Western blot

WB Size markers (kDa): 250, 130, 95, 72, 55, 36, 28, 17, 11

WB Lanes: Marker(1), RT-4(2), U251 MG(3), Plasma(4), Liver(5), Tonsil(6)

WB Target weight (kDa): 24, 23, 36, 39, 36, 13, 27, 12, 19, 7, 10

WB Validation: Supportive (Band of predicted size in kDa (+/-20%) with additional bands present)

