

CPTC-PDCD1LG2-1 (CAB079982)

Uniprot ID: [Q9BQ51](#)

Protein name: PD1L2_HUMAN

Full name: Programmed cell death 1 ligand 2

Tissue specificity: Highly expressed in heart, placenta, pancreas, lung and liver and weakly expressed in spleen, lymph nodes and thymus.

Function: Involved in the costimulatory signal, essential for T-cell proliferation and IFNG production in a PDCD1-independent manner. Interaction with PDCD1 inhibits T-cell proliferation by blocking cell cycle progression and cytokine production (By similarity).

Subcellular location:

Isoform 1:

Cell membrane (*experimental evidence*) (Topo: Single-pass type I membrane protein (*by similarity, curator inference*))

Isoform 2:

Endomembrane system (*experimental evidence*) (Topo: Single-pass type I membrane protein (*match to sequence mode!*))

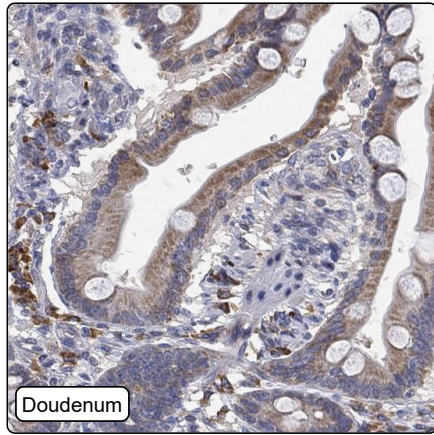
Isoform 3:

Secreted (*curator inference*)

Protein existence: Experimental evidence at protein level

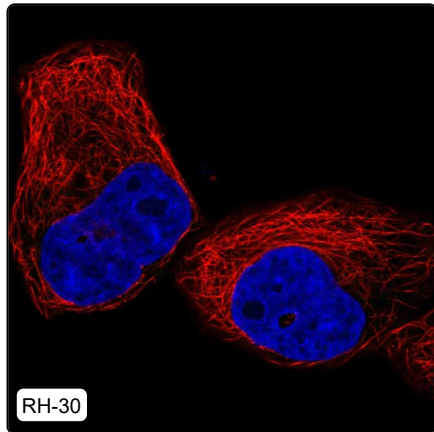
Comment:

Immunohistochemistry



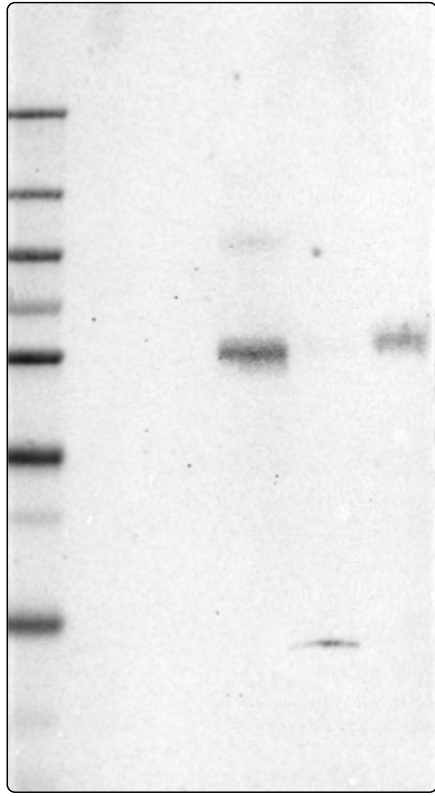
IHC protocol:	HIER pH6, Dilution 1:250
IHC test staining:	Cytoplasmic positivity in a subset of cells in gastrointestinal tract and immune cells.
Literature conformance:	Not consistent with gene/protein characterization data
Literature significance:	Limited
RNA consistency:	Not consistent with RNA expression data
IHC Sibling similarity:	Other antibody shows dissimilar IHC staining pattern
IHC fail comment:	ANTIBODY FAILED: Improbable subcellular location, Improbable histological location, Not consistent with RNA

Immunofluorescence



IF Overlay:	antibody (green), anti-tubuline (red) and DAPI (blue)
IF main location:	
IF additional location:	
IF Antibody score:	Failed IF
IF in RH-30:	Negative
IF in U-2 OS:	Negative

Western blot



WB Size markers (kDa):	250, 130, 100, 70, 55, 35, 25, 15, 10
WB Lanes:	Marker (1), RT4 (2), U-251 MG (3), Plasma (4), Liver (5), Tonsil (6)
WB Target weight (kDa):	31
WB Validation:	Uncertain (Only bands not corresponding to the predicted size.)