

# CPTC-LMNB1-1 (CAB079953)

**Uniprot ID:** [P20700](#)

**Protein name:** LMNB1\_HUMAN

**Full name:** Lamin-B1

**Function:** Lamins are components of the nuclear lamina, a fibrous layer on the nucleoplasmic side of the inner nuclear membrane, which is thought to provide a framework for the nuclear envelope and may also interact with chromatin.

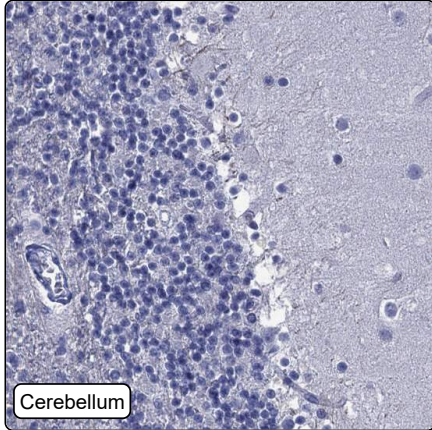
**Subcellular location:**

Nucleus inner membrane (Topo: Lipid-anchor ; Orientation: Nucleoplasmic side)

**Protein existence:** Experimental evidence at protein level

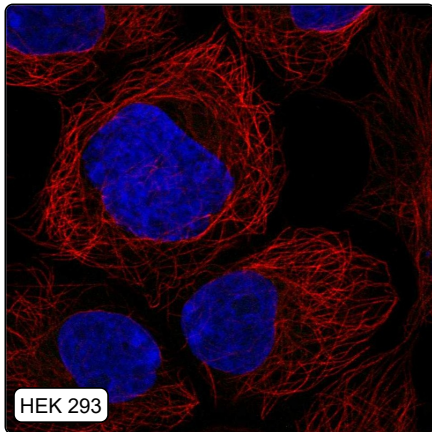
**Comment:**

## Immunohistochemistry



<b>IHC protocol:</b>	HIER pH6, Dilution 1:250
<b>IHC test staining:</b>	Negative in all tissues.
<b>Literature conformance:</b>	Not consistent with gene/protein characterization data
<b>Literature significance:</b>	Limited
<b>RNA consistency:</b>	Not consistent with RNA expression data
<b>IHC Sibling similarity:</b>	Other antibody shows dissimilar IHC staining pattern
<b>IHC fail comment:</b>	ANTIBODY FAILED: Negative

## Immunofluorescence



<b>IF Overlay:</b>	antibody (green), anti-tubuline (red) and DAPI (blue)
<b>IF main location:</b>	
<b>IF additional location:</b>	
<b>IF Antibody score:</b>	Failed IF
<b>IF in A549:</b>	Negative
<b>IF in HEK 293:</b>	Negative
<b>IF in U-2 OS:</b>	Negative

# Western blot



<b>WB Size markers (kDa):</b>	250, 130, 100, 70, 55, 35, 25, 15, 10
<b>WB Lanes:</b>	Marker (1), RT4 (2), U-251 MG (3), Plasma (4), Liver (5), Tonsil (6)
<b>WB Target weight (kDa):</b>	18, 45, 66
<b>WB Validation:</b>	Uncertain (No bands detected.)