

Phosphoserine aminotransferase 1

UniProt

Function: Besides its role as a glycolytic enzyme, mammalian GPI can function as a tumor-secreted cytokine and an angiogenic factor (AMF) that stimulates endothelial cell motility. GPI is also a neurotrophic factor (Neuroleukin) for spinal and sensory neurons.

Subcellular location: Cytoplasm. Secreted.

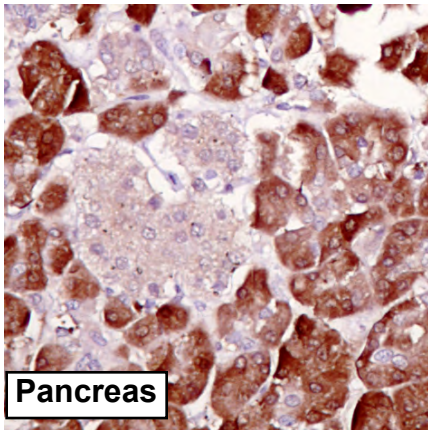
Three antibodies: GPI-1, GPI-2 and GPI-3 were tested. All three antibodies were approved for IHC. GPI-1 was selected for full protein profiling.

PSAT1-3 (CAB040568)

Immunohistochemistry

IHC protocol: HIER pH 6, Dilution 1:5000

IHC test staining: Cytoplasmic staining in selected tissues, eg kidney, pancreas CNS, fallopian tube and endometrium.



Western blot

WB Size markers (kDa): 250, 130, 95, 72, 55, 36, 28, 17, 11

WB Lanes: Marker(1), RT-4(2), U251 MG(3), Plasma(4), Liver(5), Tonsil(6)

WB Target weight (kDa): 45, 40, 35

WB Validation: Supportive - High specificity (no other antigen with signal >15%).

