

CPTC-CSF2RA-1 (CAB080017)

Uniprot ID: [P15509](#)

Protein name: CSF2R_HUMAN

Full name: Granulocyte-macrophage colony-stimulating factor receptor subunit alpha

Function: Low affinity receptor for granulocyte-macrophage colony-stimulating factor. Transduces a signal that results in the proliferation, differentiation, and functional activation of hematopoietic cells.

Subcellular location:

Unnamed:

Cell membrane (Topo: Single-pass type I membrane protein)

Isoform 3:

Secreted (*curator inference*)

Isoform 4:

Secreted (*curator inference*)

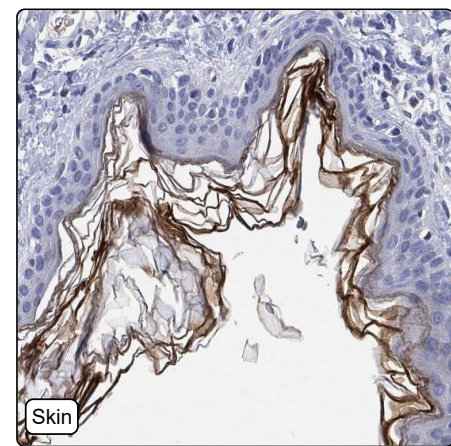
Isoform 6:

Secreted (*curator inference*)

Protein existence: Experimental evidence at protein level

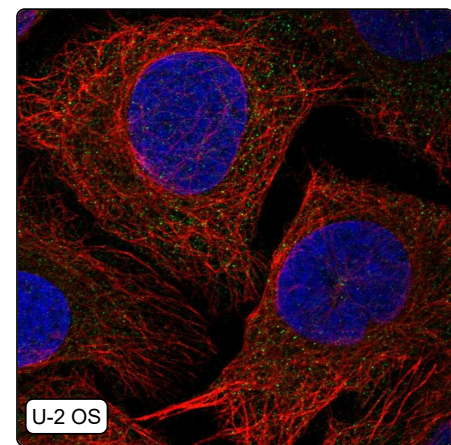
Comment:

Immunohistochemistry



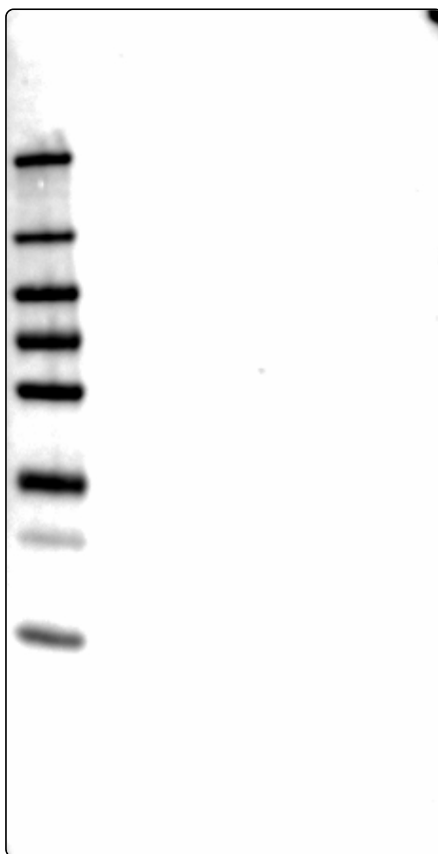
IHC protocol:	HIER pH6, Dilution 1:250
IHC test staining:	Positivity observed in stratum corneum of the epidermis. Remaining tissues were negative.
Literature conformance:	Not consistent with gene/protein characterization data
Literature significance:	
RNA similarity:	Very low consistency between antibody staining and RNA expression data
RNA tissue specificity:	Tissue enhanced (blood,placenta)
RNA tissue distribution:	Detected in many
IHC Sibling similarity:	Other antibody shows dissimilar IHC staining pattern

Immunofluorescence



IF Overlay:	antibody (green), anti-tubuline (red) and DAPI (blue)
IF main location:	Cytosol - 12: Uncertain (auto)
IF additional location:	Centrosome - 12: Uncertain (auto)
IF Antibody score:	Failed IF
IF in A549:	Negative
IF in THP-1:	Negative
IF in U-2 OS:	Centrosome Cytosol

Western blot



WB Size markers (kDa):	250, 130, 100, 70, 55, 35, 25, 15, 10
WB Lanes:	Marker (1), RT4 (2), U-251 MG (3), Plasma (4), Liver (5), Tonsil (6)
WB Target weight (kDa):	10, 27, 27, 31, 38, 44, 46, 46, 46, 47, 50
WB Validation:	Uncertain (No bands detected.)