

CPTC-CGB-10 (CAB080146)

Uniprot ID: [PODN86](#)

Protein name: CGB3_HUMAN

Full name: Choriogonadotropin subunit beta 3

Tissue specificity: High expression in the placenta throughout pregnancy.

Function: Beta subunit of the human chorionic gonadotropin (hCG). hCG is a complex glycoprotein composed of two glycosylated subunits alpha and beta which are non-covalently associated. The alpha subunit is identical to those in the pituitary gonadotropin hormones (LH, FSH and TSH). The beta subunits are distinct in each of the hormones and confer receptor and biological specificity. Has an essential role in pregnancy and maternal adaptation. Stimulates the ovaries to synthesize the steroids that are essential for the maintenance of pregnancy.

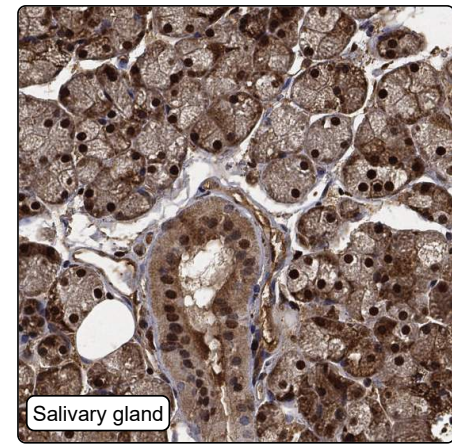
Subcellular location:

Secreted (*experimental evidence*)

Protein existence: Experimental evidence at protein level

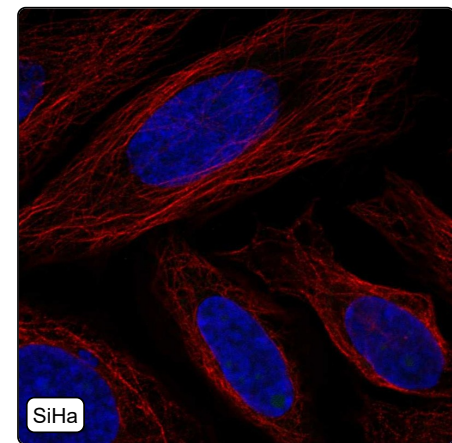
Comment:

Immunohistochemistry



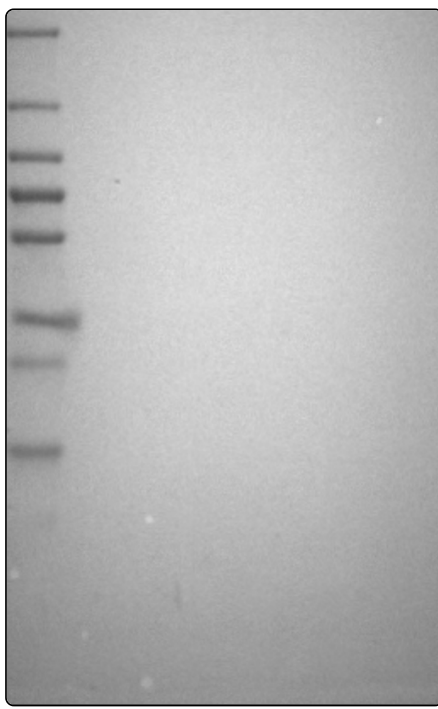
IHC protocol:	HIER pH6, Dilution 1:250
IHC test staining:	Cytoplasmic and nuclear positivity in several tissues.
Literature conformance:	Not done
Literature significance:	
RNA similarity:	Not done
RNA tissue specificity:	Tissue enriched (placenta)
RNA tissue distribution:	Detected in some
IHC Sibling similarity:	Other antibody shows dissimilar IHC staining pattern

Immunofluorescence



IF Overlay:	antibody (green), anti-tubulin (red) and DAPI (blue)
IF main location:	
IF additional location:	
IF approved for publication on HPA:	No
IF in SiHa:	Negative
IF in U-251 MG:	Negative
IF in U-2 OS:	Negative

Western blot



WB Size markers (kDa):	250, 130, 100, 70, 55, 35, 25, 15, 10
WB Lanes:	Marker (1), RT4 (2), U-251 MG (3), Plasma (4), Liver (5), Tonsil (6)
WB Target weight (kDa):	18
WB Validation:	Uncertain (No bands detected.)