

CPTC-KRAS4B-4 (CAB080345)

Uniprot ID: P01116

Protein name: RASK_HUMAN

Full name: GTPase KRas

Function: Ras proteins bind GDP/GTP and possess intrinsic GTPase activity (PubMed:20949621). Plays an important role in the regulation of cell proliferation (PubMed:23698361, PubMed:22711838). Plays a role in promoting oncogenic events by inducing transcriptional silencing of tumor suppressor genes (TSGs) in colorectal cancer (CRC) cells in a ZNF304-dependent manner (PubMed:24623306).

Subcellular location:

Unnamed:

Cell membrane (*experimental evidence*) (Topo: Lipid-anchor (*experimental evidence, curator inference*) ; Orientation: Cytoplasmic side (*curator inference*))

Endomembrane system (*experimental evidence*)

Cytoplasm > Cytosol (*experimental evidence*)

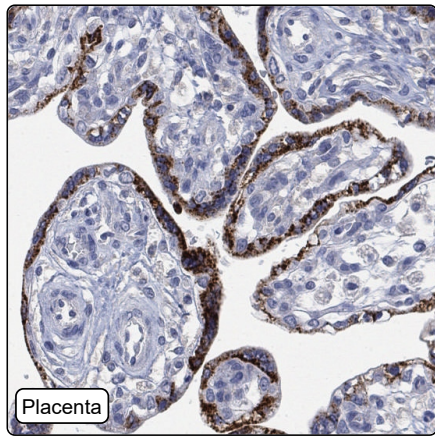
Isoform 2B:

Cell membrane (*experimental evidence*) (Topo: Lipid-anchor (*curator inference*))

Protein existence: Experimental evidence at protein level

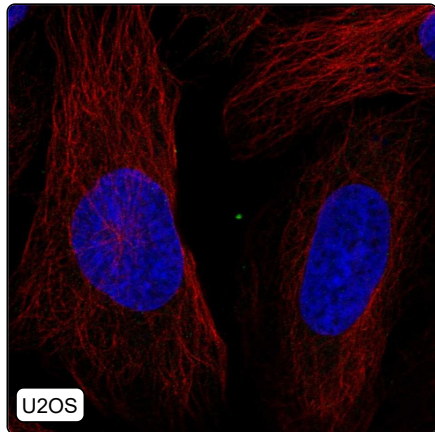
Comment:

Immunohistochemistry



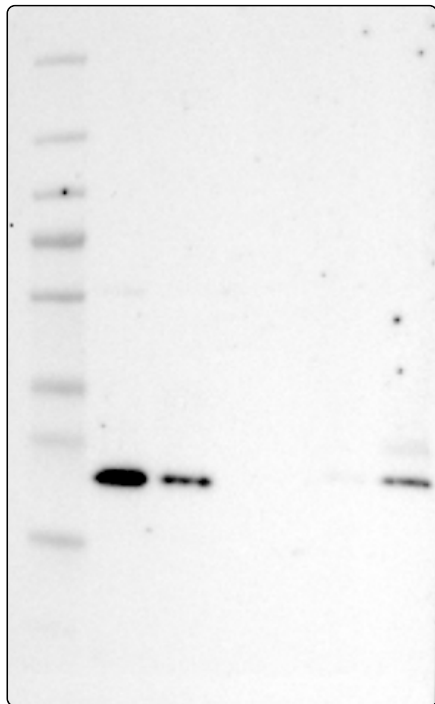
| | |
|---------------------------------|---|
| IHC protocol: | HIER pH6, Dilution 1:1000 |
| IHC test staining: | Granular cytoplasmic positivity in placenta and a subset of immune cells. |
| Literature conformance: | Not consistent with gene/protein characterization data |
| Literature significance: | |
| RNA similarity: | Very low consistency between antibody staining and RNA expression data |
| RNA tissue specificity: | Low tissue specificity |
| RNA tissue distribution: | Detected in all |
| IHC Sibling similarity: | Other antibody shows dissimilar IHC staining pattern |

Immunofluorescence



| | |
|--|--|
| IF Overlay: | antibody (green), anti-tubulin (red) and DAPI (blue) |
| IF main location: | |
| IF additional location: | |
| IF approved for publication on HPA: | No |
| IF in THP-1: | Negative |
| IF in U2OS: | Negative |

Western blot



| | |
|--------------------------------|--|
| WB Size markers (kDa): | 250, 130, 100, 70, 55, 35, 25, 15, 10 |
| WB Lanes: | Marker (1), RT-4 (2), U-251MG (3), Plasma (4), Liver (5), Tonsil (6) |
| WB Target weight (kDa): | 5, 9, 21, 22 |
| WB Validation: | Supported (Single band corresponding to the predicted size in kDa (+/-20%.)) |