

# CPTC-KRT5-1(CAB080113)

Uniprot ID: [P13647](#)

Protein name: K2C5\_HUMAN

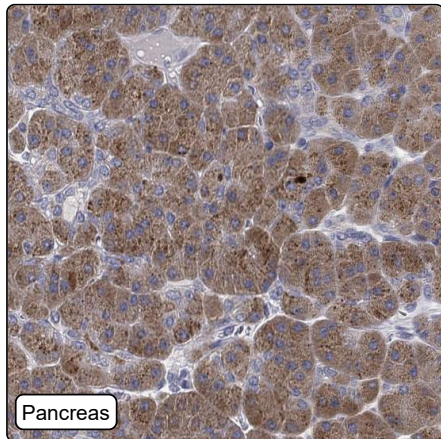
Full name: Keratin, type II cytoskeletal 5

Tissue specificity: Expressed in corneal epithelium (at protein level).

Protein existence: Experimental evidence at protein level

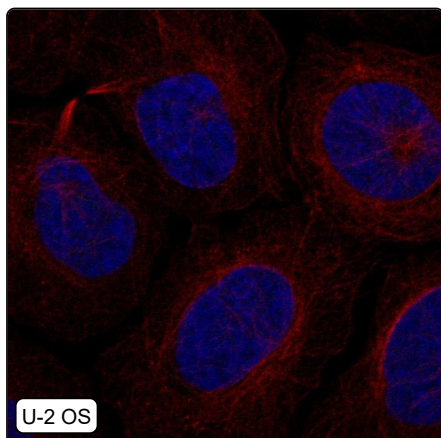
Comment:

## Immunohistochemistry



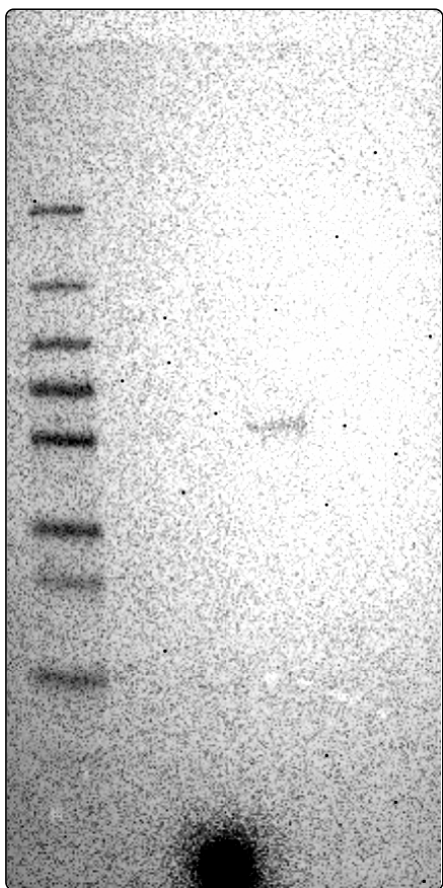
IHC protocol:	HIER pH6, Dilution 1:1000
IHC test staining:	Cytoplasmic positivity in keratinocytes with additional unspecific positivity in placenta, testis, gastrointestinal tract, pancreas and immune cells.
Literature conformance:	Partly consistent with extensive gene/protein characterization data
Literature significance:	
RNA similarity:	Low consistency between antibody staining and RNA expression data
RNA tissue specificity:	Group enriched (esophagus,skin 1,vagina)
RNA tissue distribution:	Detected in many
IHC Sibling similarity:	Other antibody shows partly similar IHC staining pattern

## Immunofluorescence



IF Overlay:	antibody (green), anti-tubulin (red) and DAPI (blue)
IF main location:	
IF additional location:	
IF approved for publication on HPA:	No
IF in HaCaT:	Negative
IF in SiHa:	Negative
IF in U-2 OS:	Negative

# Western blot



<b>WB Size markers (kDa):</b>	250, 130, 100, 70, 55, 35, 25, 15, 10
<b>WB Lanes:</b>	Marker (1), RT4 (2), U-251 MG (3), Plasma (4), Liver (5), Tonsil (6)
<b>WB Target weight (kDa):</b>	12, 14, 21, 22, 23, 62
<b>WB Validation:</b>	Supported (Single band corresponding to the predicted size in kDa (+/-20%.))