

CPTC-KRT Group A-1 (CAB079969)

Uniprot ID: P05783

Protein name: K1C18_HUMAN

Full name: Keratin, type I cytoskeletal 18

Tissue specificity: Expressed in colon, placenta, liver and very weakly in exocervix. Increased expression observed in lymph nodes of breast carcinoma.
Function: Involved in the uptake of thrombin-antithrombin complexes by hepatic cells (By similarity). When phosphorylated, plays a role in filament reorganization. Involved in the delivery of mutated CFTR to the plasma membrane. Together with KRT8, is involved in interleukin-6 (IL-6)-mediated barrier protection.

Subcellular location:

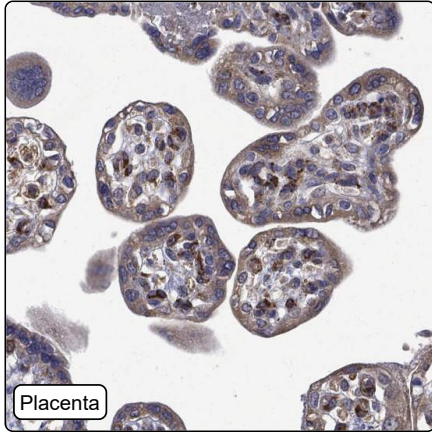
Cytoplasm > Perinuclear region

Nucleus > Nucleolus

Protein existence: Experimental evidence at protein level

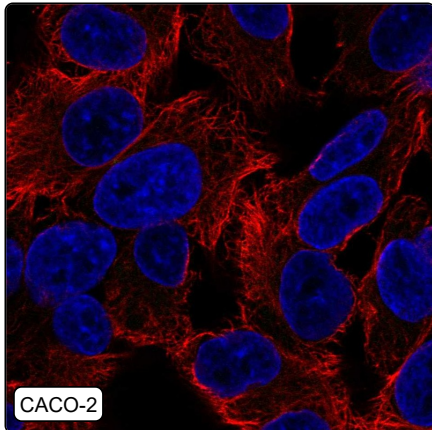
Comment:

Immunohistochemistry



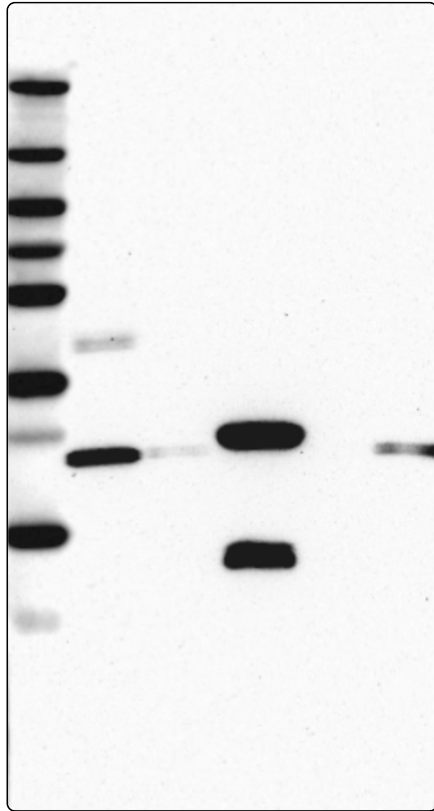
IHC protocol:	HIER pH6, Dilution 1:500
IHC test staining:	Weak cytoplasmic positivity in few tissues. Additional positivity in smooth muscle and immune cells.
Literature conformance:	Not consistent with gene/protein characterization data
Literature significance:	
RNA consistency:	Not consistent with RNA expression data
IHC Sibling similarity:	Other antibody shows dissimilar IHC staining pattern
IHC fail comment:	ANTIBODY FAILED: Improbable histological location, Not consistent with RNA

Immunofluorescence



IF Overlay:	antibody (green), anti-tubuline (red) and DAPI (blue)
IF main location:	
IF additional location:	
IF Antibody score:	Failed IF
IF in A549:	Negative
IF in CACO-2:	Negative
IF in U-2 OS:	Negative

Western blot



WB Size markers (kDa):	250, 130, 100, 70, 55, 35, 25, 15, 10
WB Lanes:	Marker (1), RT4 (2), U-251 MG (3), Plasma (4), Liver (5), Tonsil (6)
WB Target weight (kDa):	44, 48, 48
WB Validation:	Uncertain (Weak band of predicted size but with additional bands of higher intensity also present.)