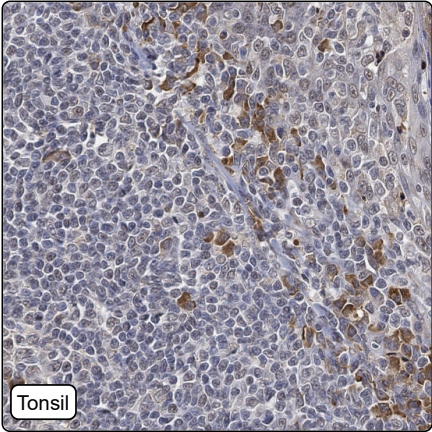


# CPTC-IL2RG-1(CAB080341)

**Uniprot ID:** [P31785](#)  
**Protein name:** IL2RG\_HUMAN  
**Full name:** Cytokine receptor common subunit gamma  
**Function:** Common subunit for the receptors for a variety of interleukins. Probably in association with IL15RA, involved in the stimulation of neutrophil phagocytosis by IL15 (PubMed:15123770).  
**Subcellular location:**  
Cell membrane (*experimental evidence*) (Topo: Single-pass type I membrane protein (*match to sequence model*))  
Cell surface (*experimental evidence*)  
**Protein existence:** Experimental evidence at protein level

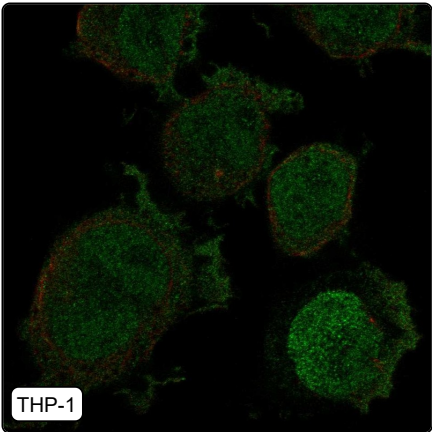
**Comment:**

## Immunohistochemistry



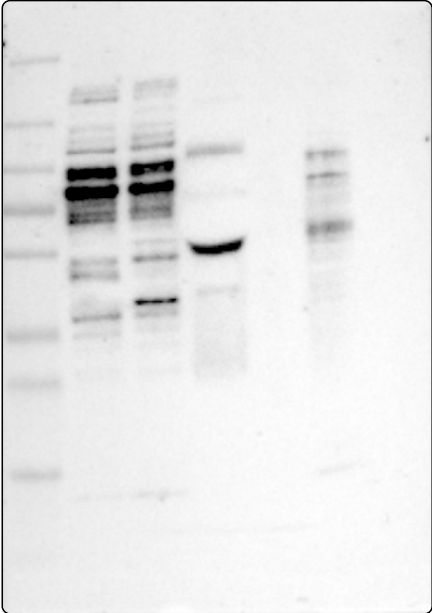
IHC protocol:	HIER pH6, Dilution 1:600
IHC test staining:	Cytoplasmic positivity in immune cells.
Literature conformance:	Consistent with extensive gene/protein characterization data
Literature significance:	
RNA similarity:	Medium consistency between antibody staining and RNA expression data
RNA tissue specificity:	Tissue enhanced (intestine,lymphoid tissue)
RNA tissue distribution:	Detected in many
IHC Sibling similarity:	Other antibody shows partly similar IHC staining pattern

## Immunofluorescence



IF Overlay:	antibody (green), anti-tubulin (red) and DAPI (blue)
IF main location:	Plasma membrane - 3: <b>Supportive</b> (auto) Nucleoplasm - 12: <b>Uncertain</b> (auto)
IF additional location:	
IF approved for publication on HPA:	Yes
IF in THP-1:	Nucleoplasm Plasma membrane

# Western blot



WB Size markers (kDa):	250, 130, 100, 70, 55, 35, 25, 15, 10
WB Lanes:	Marker (1), RT-4 (2), U-251MG (3), Plasma (4), Liver (5), Tonsil (6)
WB Target weight (kDa):	8, 11, 11, 20, 26, 42
WB Validation:	Uncertain (Weak band of predicted size but with additional bands of higher intensity also present.)