

CPTC-S100A7-1 (CAB080261)

Uniprot ID: P31151

Protein name: S10A7_HUMAN

Full name: Protein S100-A7

Tissue specificity: Fetal ear, skin, and tongue and human cell lines. Highly up-regulated in psoriatic epidermis. Also highly expressed in the urine of bladder squamous cell carcinoma (SCC) bearing patients.

Subcellular location:

Cytoplasm (*experimental evidence*)

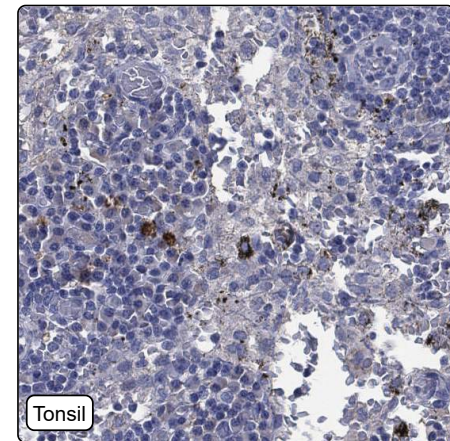
Secreted (*experimental evidence*)

NOTE: Secreted by a non-classical secretory pathway.

Protein existence: Experimental evidence at protein level

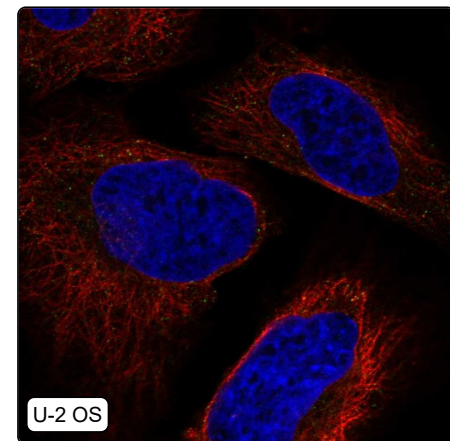
Comment:

Immunohistochemistry



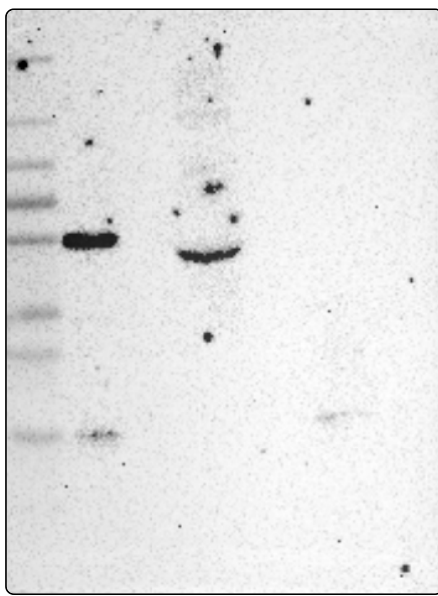
IHC protocol:	HIER pH6, Dilution 1:300
IHC test staining:	Positivity in immune cells.
Literature conformance:	Not consistent with gene/protein characterization data
Literature significance:	
RNA similarity:	Very low consistency between antibody staining and RNA expression data
RNA tissue specificity:	Group enriched (esophagus,lymphoid tissue,skin 1,vagina)
RNA tissue distribution:	Detected in many
IHC Sibling similarity:	Other antibody shows dissimilar IHC staining pattern
IHC fail comment:	ANTIBODY FAILED: Not consistent with RNA

Immunofluorescence



IF Overlay:	antibody (green), anti-tubulin (red) and DAPI (blue)
IF main location:	
IF additional location:	
IF approved for publication on HPA:	No
IF in THP-1:	Negative
IF in U-2 OS:	Negative

Western blot



WB Size markers (kDa):	250, 130, 100, 70, 55, 35, 25, 15, 10
WB Lanes:	Marker (1), RT4 (2), U-251 MG (3), Plasma (4), Liver (5), Tonsil (6)
WB Target weight (kDa):	11, 11
WB Validation:	Uncertain (Only bands not corresponding to the predicted size.)