

# CPTC-VCAM1-1 (CAB079999)

**Uniprot ID:** [P19320](#)

**Protein name:** VCAM1\_HUMAN

**Full name:** Vascular cell adhesion protein 1

**Tissue specificity:** Expressed on inflamed vascular endothelium, as well as on macrophage-like and dendritic cell types in both normal and inflamed tissue.

**Function:** Important in cell-cell recognition. Appears to function in leukocyte-endothelial cell adhesion. Interacts with integrin alpha-4/beta-1 (ITGA4/ITGB1) on leukocytes, and mediates both adhesion and signal transduction. The VCAM1/ITGA4/ITGB1 interaction may play a pathophysiologic role both in immune responses and in leukocyte emigration to sites of inflammation.

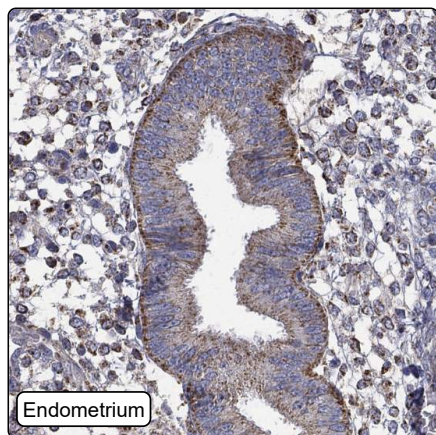
**Subcellular location:**

Membrane (Topo: Single-pass type I membrane protein)

**Protein existence:** Experimental evidence at protein level

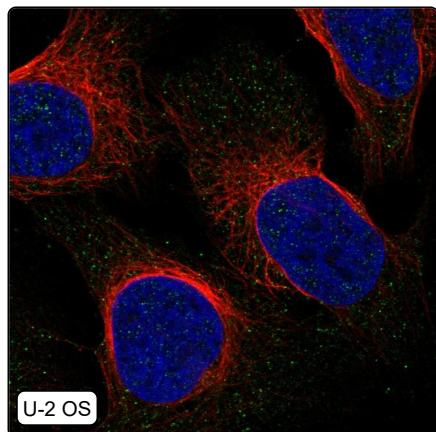
**Comment:** ICC-IF: Not expressed in our cell line panel. /Ulrika Axelsson

## Immunohistochemistry



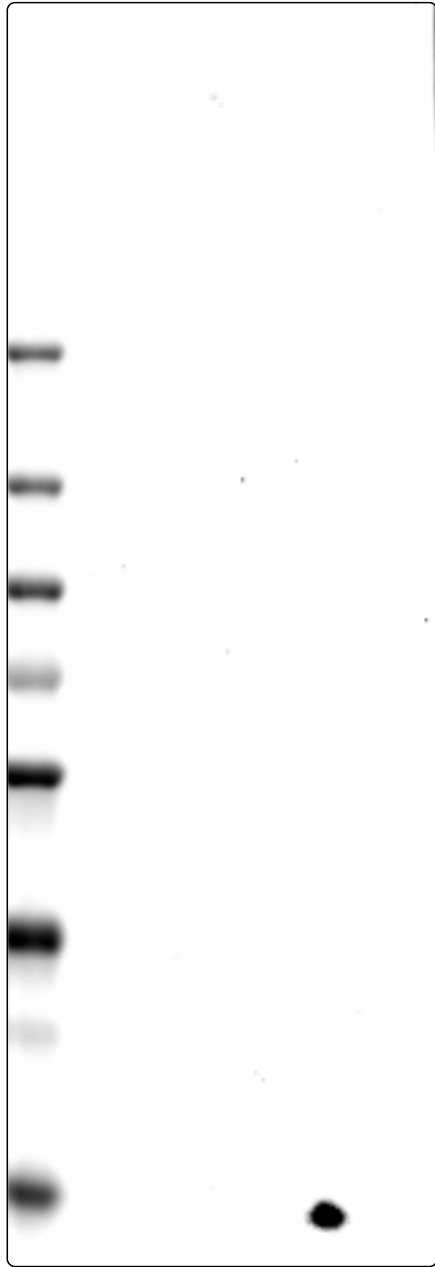
<b>IHC protocol:</b>	HIER pH6, Dilution 1:575
<b>IHC test staining:</b>	Granular positivity in several tissues. Negative in lymphoid tissues.
<b>Literature conformance:</b>	Partly consistent with gene/protein characterization data
<b>Literature significance:</b>	Limited
<b>RNA consistency:</b>	Not consistent with RNA expression data
<b>IHC Sibling similarity:</b>	Other antibody shows partly similar IHC staining pattern
<b>IHC fail comment:</b>	ANTIBODY FAILED: Improbable histological location, Not consistent with RNA

## Immunofluorescence



<b>IF Overlay:</b>	antibody (green), anti-tubuline (red) and DAPI (blue)
<b>IF main location:</b>	
<b>IF additional location:</b>	
<b>IF Antibody score:</b>	Approved
<b>IF in U-2 OS:</b>	Negative

# Western blot



<b>WB Size markers (kDa):</b>	250, 130, 100, 70, 55, 35, 25, 15, 10
<b>WB Lanes:</b>	Marker (1), RT4 (2), U-251 MG (3), Plasma (4), Liver (5), Tonsil (6)
<b>WB Target weight (kDa):</b>	59, 71, 74, 81
<b>WB Validation:</b>	Uncertain (Single band differing more than +/-20% from predicted size in kDa and not supported by experimental and/or bioinformatic data.)