

CPTC-IL1RN-1(CAB080340)

Uniprot ID: [P18510](#)

Protein name: IL1RA_HUMAN

Full name: Interleukin-1 receptor antagonist protein

Tissue specificity: The intracellular form of IL1RN is predominantly expressed in epithelial cells.

Function: Anti-inflammatory antagonist of interleukin-1 family of proinflammatory cytokines such as interleukin-1beta/IL1B and interleukin-1alpha/IL1A. Protects from immune dysregulation and uncontrolled systemic inflammation triggered by IL1 for a range of innate stimulatory agents such as pathogens.

Subcellular location:

Isoform 1:

Secreted (*experimental evidence*)

Isoform 2:

Cytoplasm

Isoform 3:

Cytoplasm

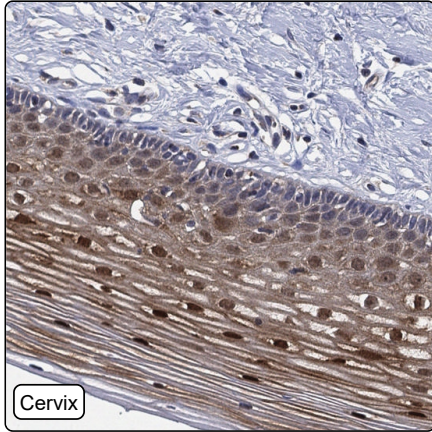
Isoform 4:

Cytoplasm

Protein existence: Experimental evidence at protein level

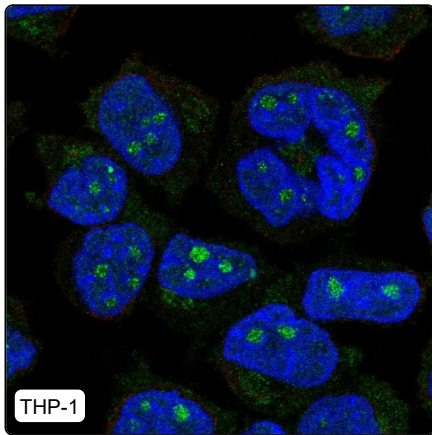
Comment:

Immunohistochemistry



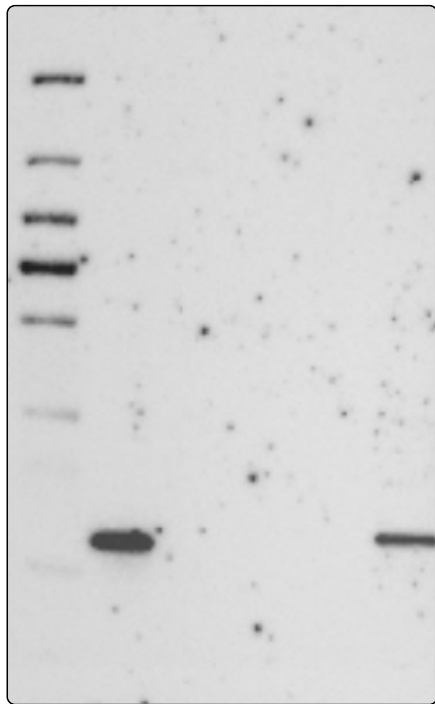
IHC protocol:	HIER pH6, Dilution 1:1000
IHC test staining:	Cytoplasmic and nuclear positivity mainly in squamous epithelial cells.
Literature conformance:	Consistent with extensive gene/protein characterization data
Literature significance:	
RNA similarity:	Medium consistency between antibody staining and RNA expression data
RNA tissue specificity:	Tissue enriched (esophagus)
RNA tissue distribution:	Detected in many
IHC Sibling similarity:	Other antibody shows similar IHC staining pattern

Immunofluorescence



IF Overlay:	antibody (green), anti-tubulin (red) and DAPI (blue)
IF main location:	Nucleoli - 12: Uncertain (auto)
IF additional location:	Cytosol - 3: Supportive (auto) Nucleoplasm - 12: Uncertain (auto)
IF approved for publication on HPA:	No
IF in THP-1:	Nucleoplasm Nucleoli Cytosol
IF in U2OS:	Nucleoli Cytosol

Western blot



WB Size markers (kDa):	250, 130, 100, 70, 55, 35, 25, 15, 10
WB Lanes:	Marker (1), RT-4 (2), U-251MG (3), Plasma (4), Liver (5), Tonsil (6)
WB Target weight (kDa):	16, 16, 18, 20, 20
WB Validation:	Supported (Single band corresponding to the predicted size in kDa (+/-20%.))