

CPTC-ICOSLG-1 (CAB079997)

Uniprot ID: [O75144](#)

Protein name: ICOSL_HUMAN

Full name: ICOS ligand

Tissue specificity: Isoform 1 is widely expressed (brain, heart, kidney, liver, lung, pancreas, placenta, skeletal muscle, bone marrow, colon, ovary, prostate, testis, lymph nodes, leukocytes, spleen, thymus and tonsil), while isoform 2 is detected only in lymph nodes, leukocytes and spleen. Expressed on activated monocytes and dendritic cells.

Function: Ligand for the T-cell-specific cell surface receptor ICOS. Acts as a costimulatory signal for T-cell proliferation and cytokine secretion; induces also B-cell proliferation and differentiation into plasma cells. Could play an important role in mediating local tissue responses to inflammatory conditions, as well as in modulating the secondary immune response by co-stimulating memory T-cell function (By similarity).

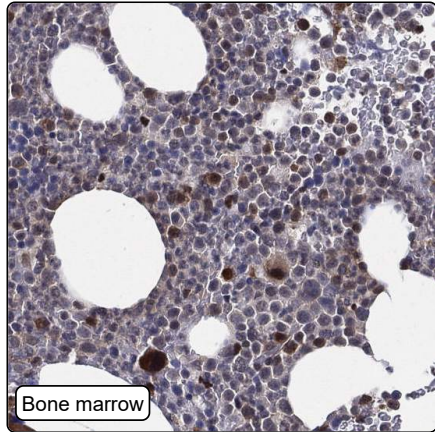
Subcellular location:

Cell membrane (*experimental evidence*) (Topo: Single-pass type I membrane protein (*match to sequence model*))

Protein existence: Experimental evidence at protein level

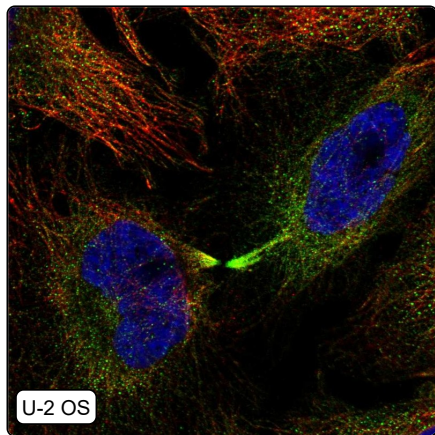
Comment:

Immunohistochemistry



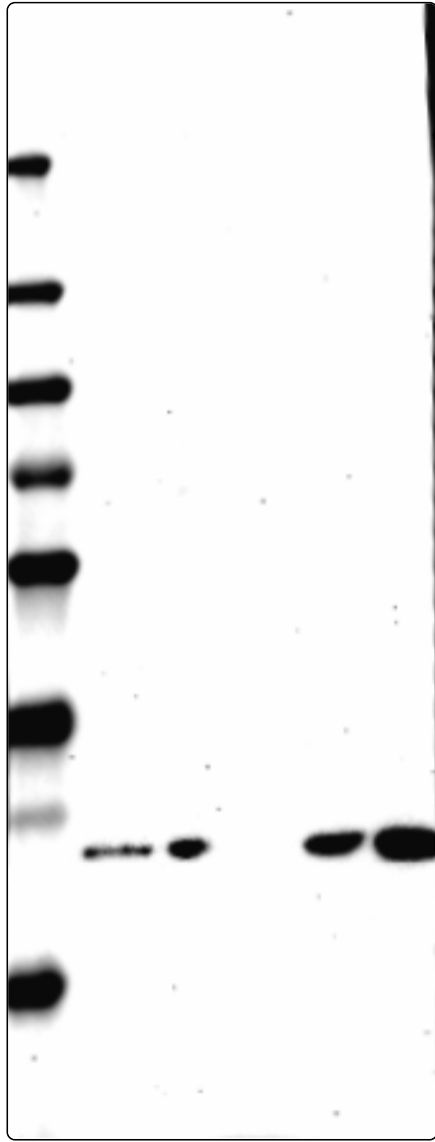
IHC protocol:	HIER pH6, Dilution 1:5000
IHC test staining:	Weak to moderate cytoplasmic and nuclear positivity in most tissues.
Literature conformance:	Partly consistent with gene/protein characterization data
Literature significance:	Limited
RNA consistency:	Mainly consistent with RNA expression data
IHC Sibling similarity:	Other antibody shows partly similar IHC staining pattern

Immunofluorescence



IF Overlay:	antibody (green), anti-tubuline (red) and DAPI (blue)
IF main location:	Microtubules - 12: Uncertain (auto) Cytokinetic bridge - 12: Uncertain (auto) Mitotic spindle - 12: Uncertain (auto)
IF additional location:	
IF Antibody score:	Failed IF
IF in REH:	Negative
IF in RT4:	Negative
IF in U-2 OS:	Csk(mt) Csk (cyt bridge) Mitotic spindle Cytosol

Western blot



WB Size markers (kDa):	250, 130, 100, 70, 55, 35, 25, 15, 10
WB Lanes:	Marker (1), RT4 (2), U-251 MG (3), Plasma (4), Liver (5), Tonsil (6)
WB Target weight (kDa):	8, 20, 33, 34, 52
WB Validation:	Supported (Single band corresponding to the predicted size in kDa (+/-20%.))