

# S100A2-2

Uniprot ID: [P29034](#)

Protein name: S10A2\_HUMAN

Full name: Protein S100-A2

Protein existence: evidence at protein level

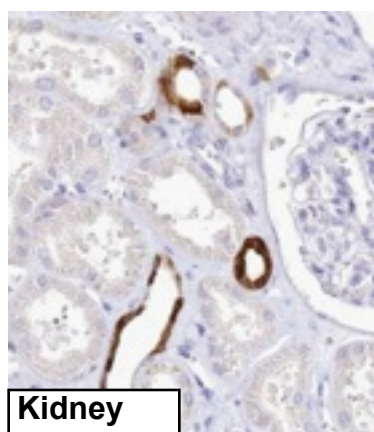
Function: May act as a modulator against excess calcium accumulation in normal human mammary epithelial cells. May also play a role in suppressing tumor cell growth.

Tissue specificity: A subset of epithelial cells including normal human mammary epithelial cells and keratinocytes.

Three antibodies: S100A2-1, S100A2-2 and S100A2-3 were tested. S100A2-1 and S100A2-2 were approved for IHC. S100A2-2 was selected for full protein profiling.

## S100A2-2 (CAB047340)

OK



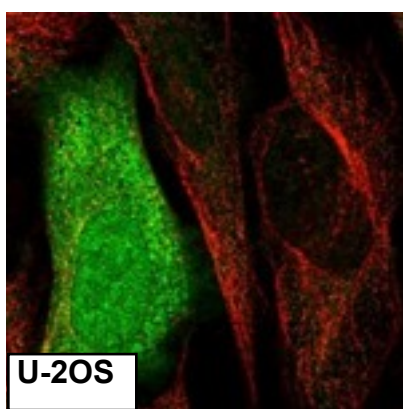
### Immunohistochemistry

IHC protocol: HIER pH 6, Dilution 1:10000

IHC test staining: Staining of cytoplasm and nuclei in squamous epithelia of skin and tonsil. Staining of distal tubules in kidney also.

### IHC Annotators comments

A subset of renal tubules, urothelial cells and neuronal cells displayed strong cytoplasmic staining with additional nuclear positivity in respiratory epithelia. Squamous epithelia, Leydig cells and chondrocytes were moderately stained. Remaining normal tissues were weakly stained or negative.

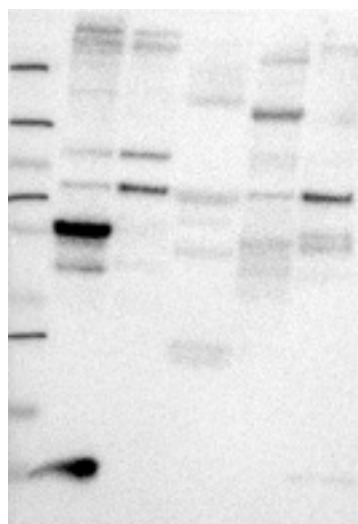


### Immunofluorescence

IF Overlay: antibody (green), anti-tubuline (red) and DAPI (blue)

IF Localization: Staining of cytoplasm in all three cell lines with additional staining of nucleus in A-431 and U-2 OS.

IF Validation: The subcellular location is partly supported by literature or no literature is available.



### Western blot

WB Size markers (kDa): 250, 130, 95, 72, 55, 36, 28, 17, 11

WB Lanes: Marker(1), RT-4(2), U251 MG(3), Plasma(4), Liver(5), Tonsil(6)

WB Target weight (kDa): 11, 11, 11, 16

WB Validation: Supportive (Band of predicted size in kDa (+/-20%) with additional bands present)