

# MAGE4

## UniProt

**Function:** Not known, though may play a role in embryonal development and tumor transformation or aspects of tumor progression.

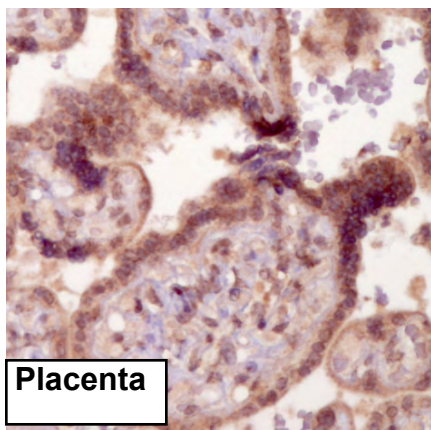
**Subcellular location:** Not determined

**Tissue specificity:** Expressed in many tumors of several types, such as melanoma, head and neck squamous cell carcinoma, lung carcinoma and breast carcinoma, but not in normal tissues except for testes and placenta.

**Three antibodies: MAGE4-1, MAGE4-2 and MAGE4-3 were tested. MAGE4-1 and MAGE4-2 were approved for IHC. MAGE4-1 was selected for full protein profiling.**

---

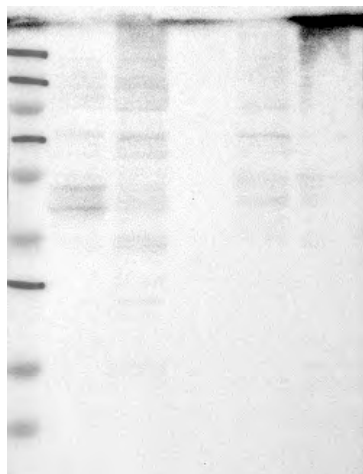
## MAGE4-2 (CAB040536)



### Immunohistochemistry

**IHC protocol:** HIER pH 6, Dilution 1:500

**IHC test staining:** Cytoplasmic and nuclear staining, which is pronounced in testis and squamous cell carcinomas (SCC).



### Western blot

**WB Size markers (kDa):** 250, 130, 95, 72, 55, 36, 28, 17, 11

**WB Lanes:** Marker(1), RT-4(2), U251 MG(3), Plasma(4), Liver(5), Tonsil(6)

**WB Target weight (kDa):** 38, 35, 26, 25, 23, 19

**WB Validation:** Non-Supportive (Only bands not corresponding to the predicted size)