

CPTC-SLC31A2-3 (CAB080267)

Uniprot ID: [O15432](#)

Protein name: COPT2_HUMAN

Full name: Probable low affinity copper uptake protein 2

Tissue specificity: Ubiquitous.

Function: Involved in low-affinity copper uptake.

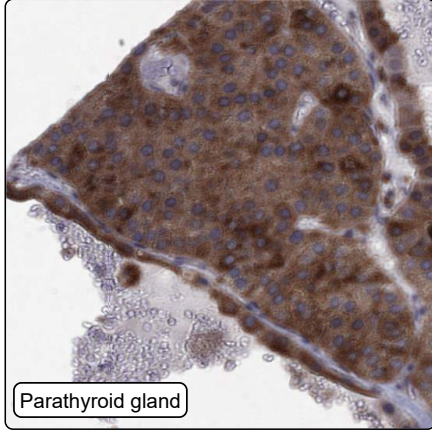
Subcellular location:

Membrane (*curator inference*) (Topo: Multi-pass membrane protein (*curator inference*))

Protein existence: Experimental evidence at protein level

Comment:

Immunohistochemistry



IHC protocol:	HIER pH6, Dilution 1:600
IHC test staining:	Cytoplasmic positivity in several tissues.
Literature conformance:	Partly consistent with gene/protein characterization data
Literature significance:	Limited
RNA similarity:	Low consistency between antibody staining and RNA expression data
RNA tissue specificity:	Group enriched (parathyroid gland, salivary gland)
RNA tissue distribution:	Detected in many
IHC Sibling similarity:	Other antibody shows partly similar IHC staining pattern
Reliability score:	Supported
APE summary:	Cytoplasmic expression in most tissues.
APE explanatory sentences:	Medium consistency between antibody staining and RNA expression data. Presumed off target binding observed and disregarded.
Orthogonal validation:	No
Independent validation:	No
IHC Annotation summary:	Most normal tissues showed granular cytoplasmic positivity of varying intensity. A few cases of most cancers showed weak to moderate cytoplasmic staining, often with a granular pattern. Renal cancers were negative.