

CPTC-LMNB1-2 (CAB079954)

Uniprot ID: [P20700](#)

Protein name: LMNB1_HUMAN

Full name: Lamin-B1

Function: Lamins are components of the nuclear lamina, a fibrous layer on the nucleoplasmic side of the inner nuclear membrane, which is thought to provide a framework for the nuclear envelope and may also interact with chromatin.

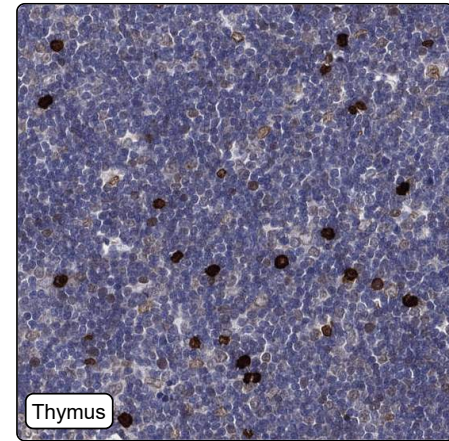
Subcellular location:

Nucleus inner membrane (Topo: Lipid-anchor ; Orientation: Nucleoplasmic side)

Protein existence: Experimental evidence at protein level

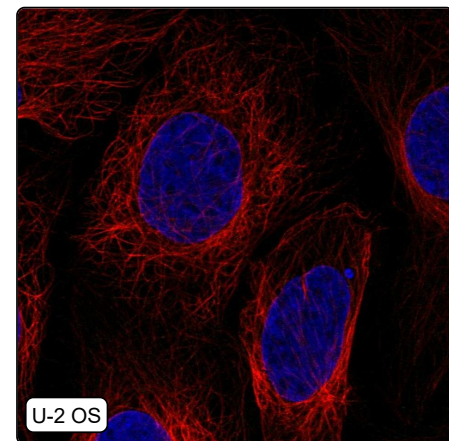
Comment:

Immunohistochemistry



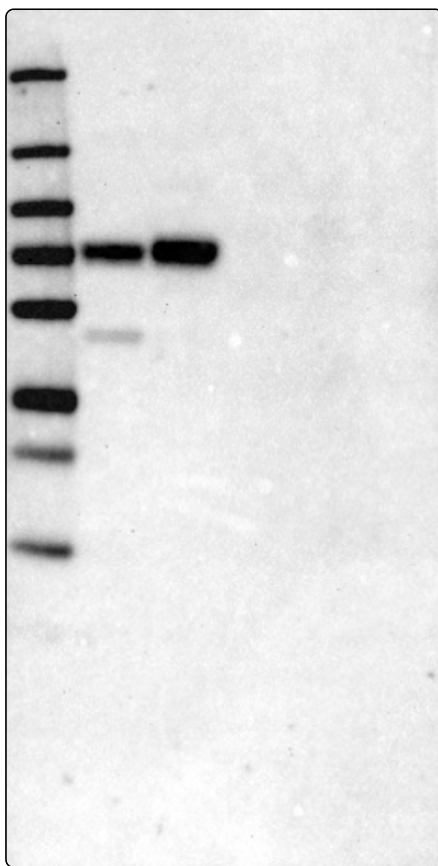
IHC protocol:	HIER pH6, Dilution 1:2500
IHC test staining:	Moderate to strong nuclear membrane positivity in most tissues and weak to moderate cytoplasmic positivity in few tissues. Additional nuclear positivity in a subset of immune cells.
Literature conformance:	Consistent with extensive gene/protein characterization data
Literature significance:	
RNA similarity:	Medium consistency between antibody staining and RNA expression data
RNA tissue specificity:	Tissue enhanced (lymphoid tissue)
RNA tissue distribution:	Detected in all
IHC Sibling similarity:	Other antibody shows similar IHC staining pattern

Immunofluorescence



IF Overlay:	antibody (green), anti-tubuline (red) and DAPI (blue)
IF main location:	
IF additional location:	
IF Antibody score:	Failed IF
IF in A549:	Negative
IF in HEK 293:	Negative
IF in U-2 OS:	Negative

Western blot



WB Size markers (kDa):	250, 130, 100, 70, 55, 35, 25, 15, 10
WB Lanes:	Marker (1), RT4 (2), U-251 MG (3), Plasma (4), Liver (5), Tonsil (6)
WB Target weight (kDa):	18, 45, 66
WB Validation:	Supported (Single band corresponding to the predicted size in kDa (+/-20%.))