

GSTMu1-6

Uniprot ID: [P09488](#)

Protein name: GSTM1_HUMAN

Full name: Glutathione S-transferase Mu 1

Protein existence: evidence at protein level

Function: Conjugation of reduced glutathione to a wide number of exogenous and endogenous hydrophobic electrophiles.

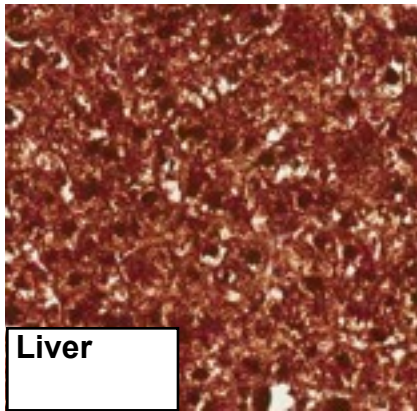
Subcellular location: Cytoplasm.

Tissue specificity: Liver (at protein level).

Six antibodies: GSTMu1-1, GSTMu1-2, GSTMu1-3, GSTMu1-4, GSTMu1-6 and GSTMu1-7 were tested. All six antibodies were approved for IHC. GSTMu1-3 was selected for full protein profiling.

GSTMu1-6 (CAB047359)

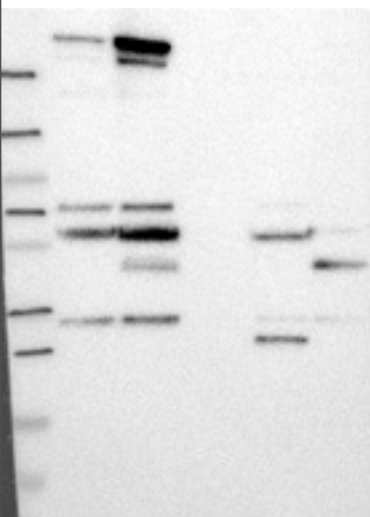
OK



Immunohistochemistry

IHC protocol: HIER pH 6, Dilution 1:7000

IHC test staining: Strong staining of liver normal/cancer and testis.



Western blot

WB Size markers (kDa): 250, 130, 95, 72, 55, 36, 28, 17, 11

WB Lanes: Marker(1), RT-4(2), U251 MG(3), Plasma(4), Liver(5), Tonsil(6)

WB Target weight (kDa): 26, 17, 28, 21

WB Validation: Not supportive (Weak band of predicted size but with additional bands of higher intensity also present)