

# S100A2-3

Uniprot ID: [P29034](#)

Protein name: S10A2\_HUMAN

Full name: Protein S100-A2

Protein existence: evidence at protein level

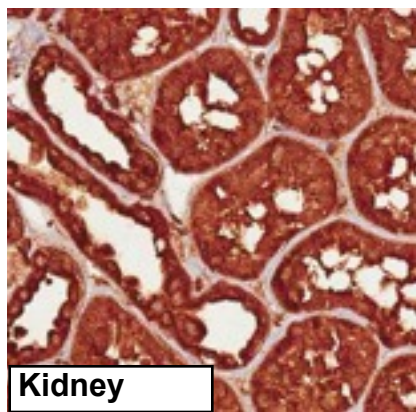
Function: May act as a modulator against excess calcium accumulation in normal human mammary epithelial cells. May also play a role in suppressing tumor cell growth.

Tissue specificity: A subset of epithelial cells including normal human mammary epithelial cells and keratinocytes.

Three antibodies: S100A2-1, S100A2-2 and S100A2-3 were tested. S100A2-1 and S100A2-2 were approved for IHC. S100A2-2 was selected for full protein profiling.

## S100A2-3 (CAB047341)

Fail

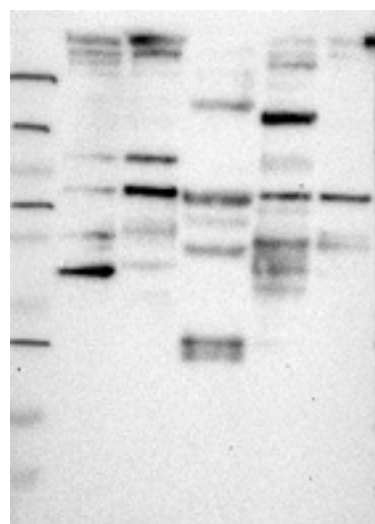


Kidney

### Immunohistochemistry

IHC protocol: HIER pH 6, Dilution 1:1000

IHC test staining: General cytoplasmic staining.



### Western blot

WB Size markers (kDa): 250, 130, 95, 72, 55, 36, 28, 17, 11

WB Lanes: Marker(1), RT-4(2), U251 MG(3), Plasma(4), Liver(5), Tonsil(6)

WB Target weight (kDa): 11, 11, 11, 16

WB Validation: Not supportive (Only bands not corresponding to the predicted size)