

CPTC-ENTPD1-1 (CAB079986)

Uniprot ID: [P49961](#)

Protein name: ENTP1_HUMAN

Full name: Ectonucleoside triphosphate diphosphohydrolase 1

Tissue specificity: Expressed primarily on activated lymphoid cells. Also expressed in endothelial tissues. Isoform 1 and isoform 3 are present in both placenta and umbilical vein, whereas isoform 2 is present in placenta only.

Function: In the nervous system, could hydrolyze ATP and other nucleotides to regulate purinergic neurotransmission. Could also be implicated in the prevention of platelet aggregation by hydrolyzing platelet-activating ADP to AMP. Hydrolyzes ATP and ADP equally well.

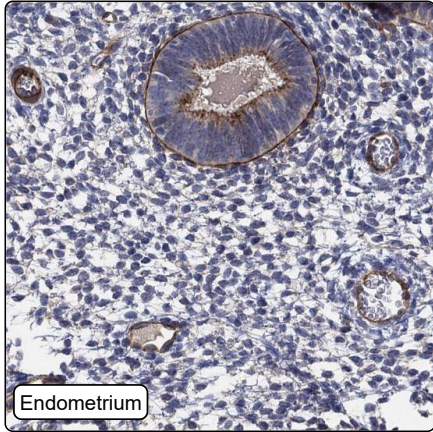
Subcellular location:

Membrane (*curator inference*) (Topo: Multi-pass membrane protein (*curator inference*))

Protein existence: Experimental evidence at protein level

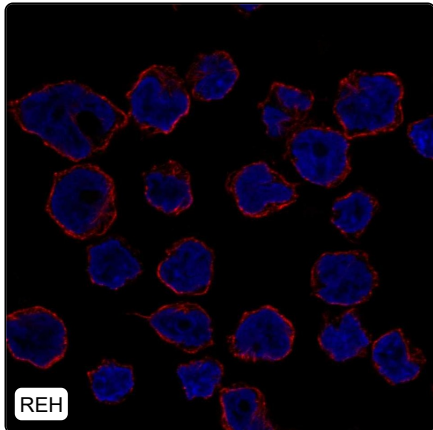
Comment:

Immunohistochemistry



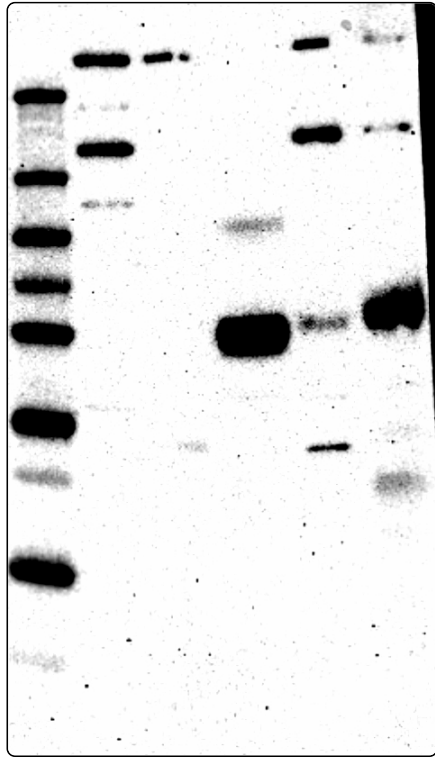
IHC protocol:	HIER pH6, Dilution 1:800
IHC test staining:	Cytoplasmic positivity in several tissues. Additional positivity in endothelium and immune cells.
Literature conformance:	Consistent with gene/protein characterization data
Literature significance:	Limited
RNA consistency:	Mainly not consistent with RNA expression data
IHC Sibling similarity:	Other antibody shows partly similar IHC staining pattern

Immunofluorescence



IF Overlay:	antibody (green), anti-tubuline (red) and DAPI (blue)
IF main location:	
IF additional location:	
IF Antibody score:	Failed IF
IF in GAMG:	Negative
IF in REH:	Negative
IF in U-2 OS:	Negative

Western blot



WB Size markers (kDa):	250, 130, 100, 70, 55, 35, 25, 15, 10
WB Lanes:	Marker (1), RT4 (2), U-251 MG (3), Plasma (4), Liver (5), Tonsil (6)
WB Target weight (kDa):	46, 58, 59, 59
WB Validation:	Supported (Band of predicted size in kDa (+/-20%) with additional bands present.)