

S100A4-3 (635A23.1)

Protein: Protein S100-A4

UniProt

Tissue specificity: Ubiquitously expressed.

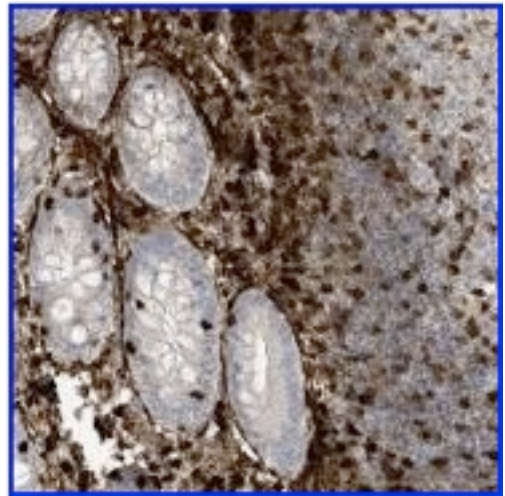
IHC comment

Approved for IHC. Cytoplasmic staining mainly in inflammatory cells and smooth muscle.

IHC protocol

HIER pH 6

Diluted 1:1500

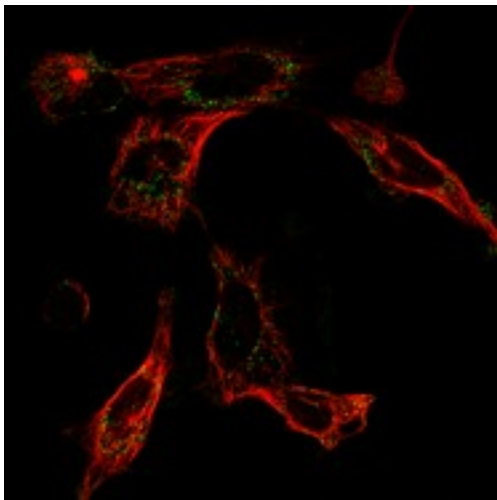


IHC. Appendix

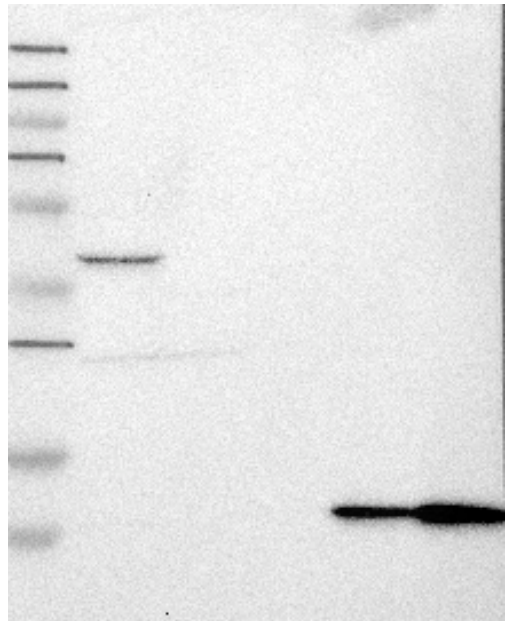
Annotators comment

Lymphoid cells, urothelial cells, fibroblasts and decidual cells exhibited strong cytoplasmic and nuclear positivity. Among tumors, few malignant lymphomas, melanomas, urothelial cancers and ovarian cancers showed strong cytoplasmic and nuclear staining. Remaining normal and tumor tissues were in general negative.

S100A4-3 (635A23.1)
Protein: Protein S100-A4



IF. Celline: U251
Overlay – antibody and anti-tubulin
Staining: Strong
Localisation: Vesicles



WB. Supportive (Band of predicted size in kDa (+/-20%) with additional bands present)