

CPTC-CTNNB1-1 (CAB080185)

Uniprot ID: [Q8WYA6](#)

Protein name: CTBL1_HUMAN

Full name: Beta-catenin-like protein 1

Tissue specificity: Widely expressed with highest levels in skeletal muscle, placenta, heart, spleen, testis and thyroid.

Function: Component of the PRP19-CDC5L complex that forms an integral part of the spliceosome and is required for activating pre-mRNA splicing. Participates in AID/AICDA-mediated Ig class switching recombination (CSR). May induce apoptosis.

Subcellular location:

Isoform 1:

Nucleus

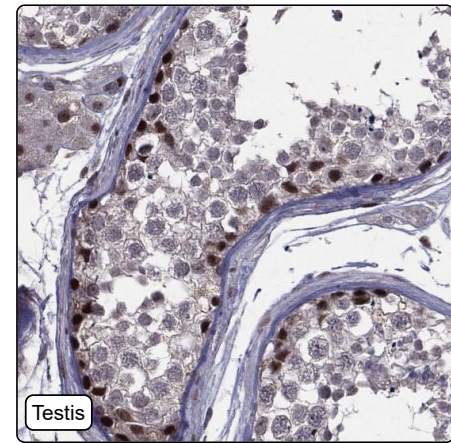
Isoform 2:

Cytoplasm (*curator inference*)

Protein existence: Experimental evidence at protein level

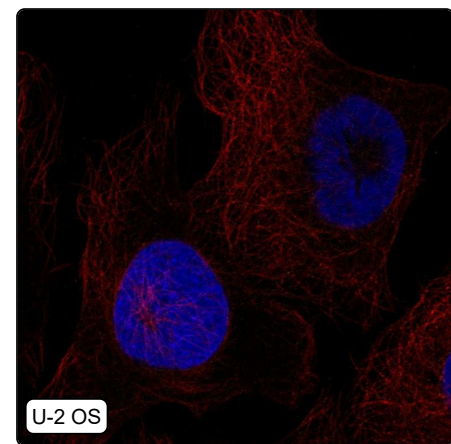
Comment:

Immunohistochemistry



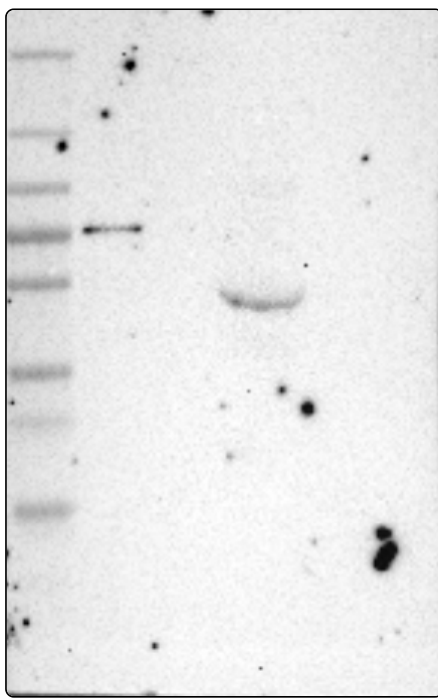
IHC protocol:	HIER pH6, Dilution 1:1000
IHC test staining:	Nucleoli positivity in several tissues. Additional cytoplasmic positivity in few tissues.
Literature conformance:	Partly consistent with extensive gene/protein characterization data
Literature significance:	
RNA similarity:	Very low consistency between antibody staining and RNA expression data
RNA tissue specificity:	Low tissue specificity
RNA tissue distribution:	Detected in all
IHC Sibling similarity:	Other antibody shows partly similar IHC staining pattern
IHC fail comment:	ANTIBODY FAILED: Improbable subcellular location, Not consistent with RNA

Immunofluorescence



IF Overlay:	antibody (green), anti-tubulin (red) and DAPI (blue)
IF main location:	
IF additional location:	
IF approved for publication on HPA:	No
IF in THP-1:	Negative
IF in U-2 OS:	Negative

Western blot



WB Size markers (kDa):	250, 130, 100, 70, 55, 35, 25, 15, 10
WB Lanes:	Marker (1), RT4 (2), U-251 MG (3), Plasma (4), Liver (5), Tonsil (6)
WB Target weight (kDa):	19, 36, 43, 62, 62, 65, 66
WB Validation:	Supported (Single band corresponding to the predicted size in kDa (+/-20%.))