

# CPTC-ABCB1-2 (CAB080060)

**Uniprot ID:** [P08183](#)

**Protein name:** MDR1\_HUMAN

**Full name:** ATP-dependent translocase ABCB1

**Tissue specificity:** Expressed in liver, kidney, small intestine and brain.

**Function:** Translocates drugs and phospholipids across the membrane (PubMed:8898203, PubMed:2897240, PubMed:9038218). Catalyzes the flop of phospholipids from the cytoplasmic to the exoplasmic leaflet of the apical membrane. Participates mainly to the flop of phosphatidylcholine, phosphatidylethanolamine, beta-D-glucosylceramides and sphingomyelins (PubMed:8898203). Energy-dependent efflux pump responsible for decreased drug accumulation in multidrug-resistant cells (PubMed:2897240, PubMed:9038218).

**Subcellular location:**

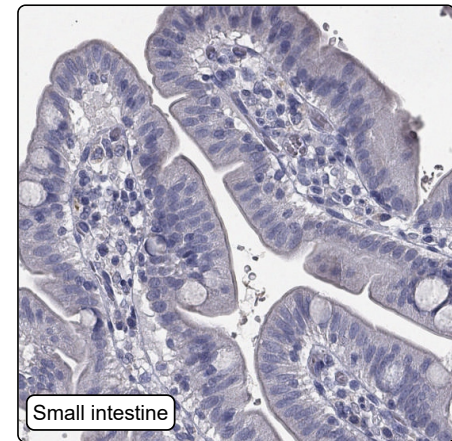
Cell membrane (*by similarity*) (Topo: Multi-pass membrane protein (*match to sequence model*))

Apical cell membrane (*experimental evidence*)

**Protein existence:** Experimental evidence at protein level

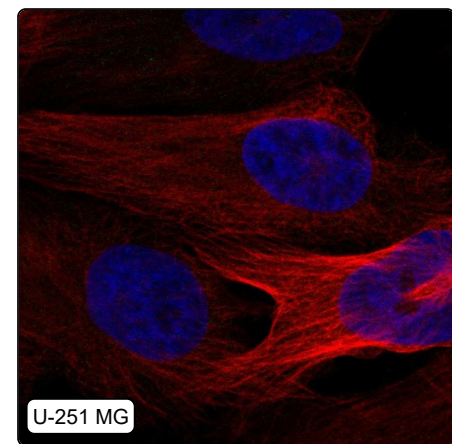
**Comment:**

## Immunohistochemistry



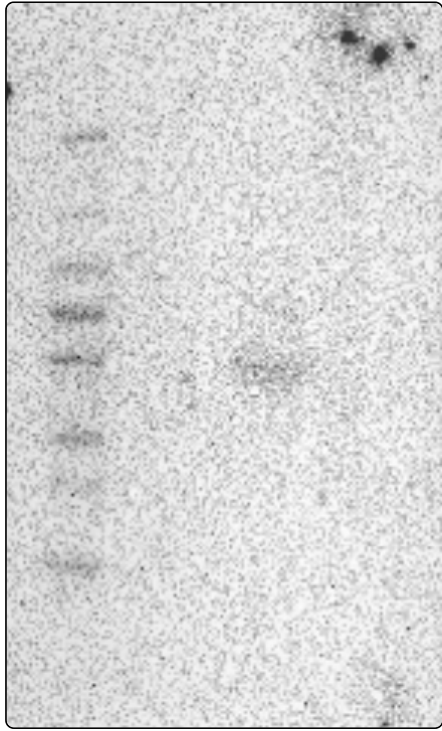
<b>IHC protocol:</b>	HIER pH6, Dilution 1:465
<b>IHC test staining:</b>	Negative in all tissues.
<b>Literature conformance:</b>	Not consistent with gene/protein characterization data
<b>Literature significance:</b>	
<b>RNA similarity:</b>	Very low consistency between antibody staining and RNA expression data
<b>RNA tissue specificity:</b>	Tissue enhanced (adrenal gland,intestine)
<b>RNA tissue distribution:</b>	Detected in many
<b>IHC Sibling similarity:</b>	Other antibody shows dissimilar IHC staining pattern

## Immunofluorescence



<b>IF Overlay:</b>	antibody (green), anti-tubulin (red) and DAPI (blue)
<b>IF main location:</b>	
<b>IF additional location:</b>	
<b>IF approved for publication on HPA:</b>	No
<b>IF in SiHa:</b>	Negative
<b>IF in U-251 MG:</b>	Negative
<b>IF in U-2 OS:</b>	Negative

# Western blot



<b>WB Size markers (kDa):</b>	250, 130, 100, 70, 55, 35, 25, 15, 10
<b>WB Lanes:</b>	Marker (1), RT4 (2), U-251 MG (3), Plasma (4), Liver (5), Tonsil (6)
<b>WB Target weight (kDa):</b>	6, 134, 141, 141
<b>WB Validation:</b>	Uncertain (No bands detected.)