

PSMD4-3

Uniprot ID: [P55036](#)

Protein name: PSMD4_HUMAN

Full name: 26S proteasome non-ATPase regulatory subunit 4

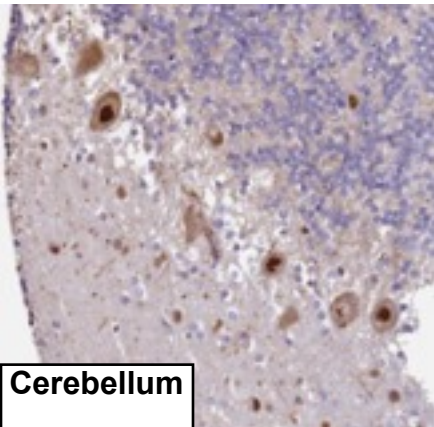
Protein existence: evidence at protein level

Function: Binds and presumably selects ubiquitin-conjugates for destruction. Displays selectivity for longer polyubiquitin chains. Modulates intestinal fluid secretion.

Three antibodies: PSMD4-1, PSMD4-2 and PSMD4-3 were tested. PSMD4-3 was selected for full protein profiling.

PSMD4-3 (CAB047300)

OK



Cerebellum

Immunohistochemistry

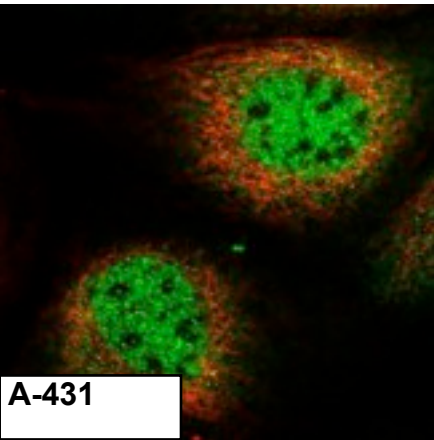
IHC protocol: HIER pH 6, Dilution 1:1000

IHC test staining: Mainly cytoplasmic staining, which is pronounced in testis and squamous cell carcinomas (SCC) but also intestine, kidney and pancreas. Additional nuclear staining in some SCC.

IHC Annotators comments

Most of the normal tissues displayed moderate cytoplasmic positivity. Additional nuclear staining was observed in squamous epithelia. Thyroid, urothelium, breast, neuronal cells and cells in red pulp of spleen were strongly stained.

Malignant cells displayed moderate cytoplasmic positivity. Thyroid cancers along with a few cases of malignant melanomas, ovarian, lung and pancreatic cancers exhibited strong staining.



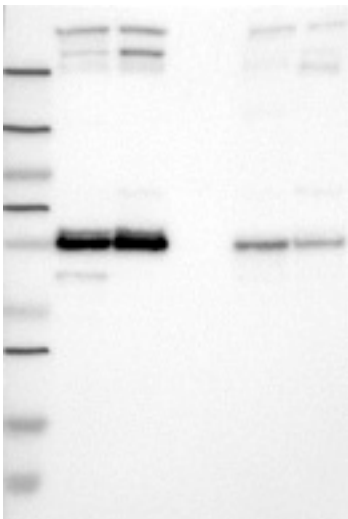
A-431

Immunofluorescence

IF Overlay: antibody (green), anti-tubuline (red) and DAPI (blue)

IF Localization: Staining of nucleus and cytoplasm in all three cell lines

IF Validation: The subcellular location is supported by literature.



Western blot

WB Size markers (kDa): 250, 130, 95, 72, 55, 36, 28, 17, 11

WB Lanes: Marker(1), RT-4(2), U251 MG(3), Plasma(4), Liver(5), Tonsil(6)

WB Target weight (kDa): 41, 41, 22, 4, 9, 21

WB Validation: Supportive - Band of predicted size in kDa (+/-20%) with additional bands present