

CPTC-KRT Group B-1 (CAB079970)

Uniprot ID: [P08729](#)

Protein name: K2C7_HUMAN

Full name: Keratin, type II cytoskeletal 7

Tissue specificity: Expressed in cultured epidermal, bronchial and mesothelial cells but absent in colon, ectocervix and liver. Observed throughout the glandular cells in the junction between stomach and esophagus but is absent in the esophagus.

Function: Blocks interferon-dependent interphase and stimulates DNA synthesis in cells. Involved in the translational regulation of the human papillomavirus type 16 E7 mRNA (HPV16 E7).

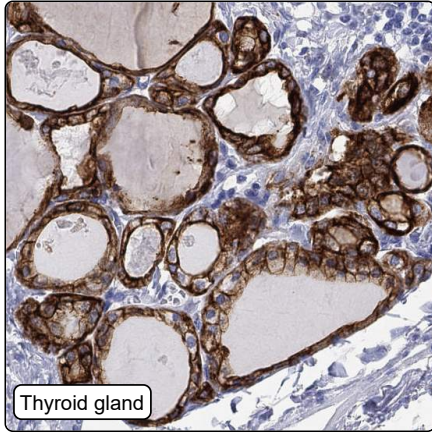
Subcellular location:

Cytoplasm (*experimental evidence*)

Protein existence: Experimental evidence at protein level

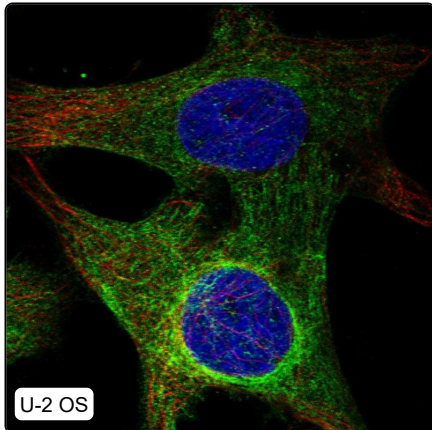
Comment: ICC-IF: We will try to get a good staining of this antibody in two more cell lines, before publication on the HPA. /Ulrika Axelsson

Immunohistochemistry



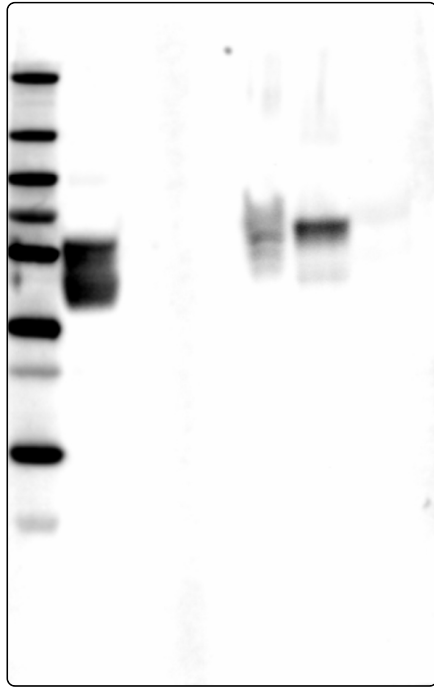
IHC protocol:	HIER pH6, Dilution 1:10000
IHC test staining:	Moderate to strong cytoplasmic and membranous positivity in several tissues.
Literature conformance:	Partly consistent with gene/protein characterization data
Literature significance:	Limited
RNA consistency:	Mainly not consistent with RNA expression data
IHC Sibling similarity:	Other antibody shows partly similar IHC staining pattern

Immunofluorescence



IF Overlay:	antibody (green), anti-tubuline (red) and DAPI (blue)
IF main location:	Intermediate filaments - 5: Approved (auto)
IF additional location:	Cytosol - 3: Supportive (auto)
IF Antibody score:	Approved
IF in A549:	Negative
IF in RT4:	Negative
IF in U-2 OS:	Csk(Int Fil) Cytosol

Western blot



WB Size markers (kDa):	250, 130, 100, 70, 55, 35, 25, 15, 10
WB Lanes:	Marker (1), RT4 (2), U-251 MG (3), Plasma (4), Liver (5), Tonsil (6)
WB Target weight (kDa):	15, 51
WB Validation:	Supported (Band of predicted size in kDa (+/-20%) with additional bands present.)