

Uniprot ID: [P21673](#)

Protein name: SAT1_HUMAN

SAT1-2

Full name: Diamine acetyltransferase 1

Protein existence: evidence at protein level

Function: Enzyme which catalyzes the acetylation of polyamines. Substrate specificity: norspermidine = spermidine >> spermine > N(1)-acetylspermine > putrescine. This highly regulated enzyme allows a fine attenuation of the intracellular concentration of polyamines. Also involved in the regulation of polyamine transport out of cells. Acts on 1,3-diaminopropane, 1,5-diaminopentane, putrescine, spermidine (forming N(1)- and N(8)-acetylspermidine), spermine, N(1)-acetylspermidine and N(8)-acetylspermidine.

Subcellular location: Cytoplasm.

Two antibodies: SAT1-2 and SAT1-3 were tested. SAT1-3 was approved for IHC and selected for full protein profiling.

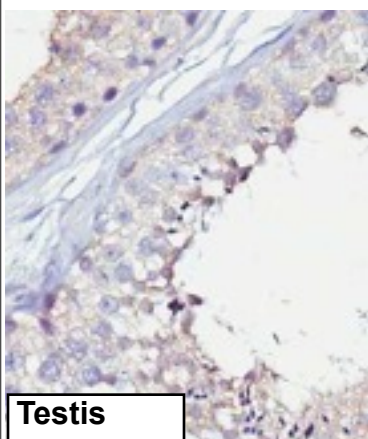
SAT1-2 (CAB047342)

Fail

Immunohistochemistry

IHC protocol: HIER pH 6, Dilution 1:20

IHC test staining: Weak staining of neuropil in cns.



Western blot

WB Size markers (kDa): 250, 130, 95, 72, 55, 36, 28, 17, 11

WB Lanes: Marker(1), RT-4(2), U251 MG(3), Plasma(4), Liver(5), Tonsil(6)

WB Target weight (kDa): 20, 14, 17, 17, 23

WB Validation: Not supportive (Only bands not corresponding to the predicted size)

